



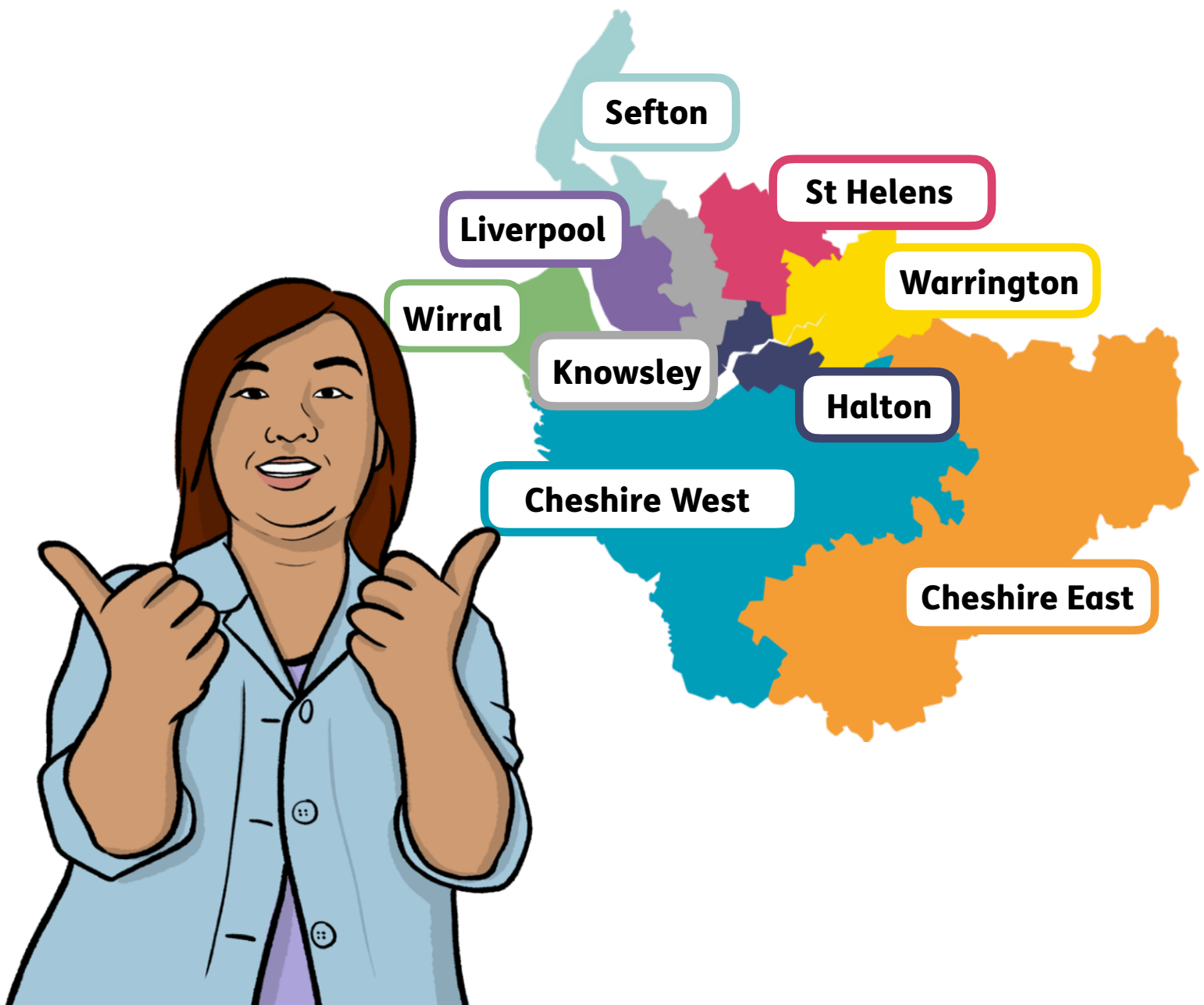
Easy
Read



Cheshire and Merseyside

How we will get people involved in our work

Our Involvement Plan 2024-2026



Easy Read



This is an Easy Read version of another document. It may not include all of the information but it will tell you about the important parts.



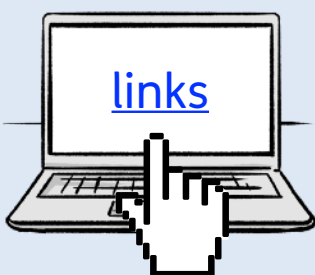
This Easy Read booklet uses easier words and pictures. Some people may still want help to read it.



Some words are in **bold** - this means the writing is thicker and darker. These are important words in the booklet.



Sometimes if a bold word is hard to understand, we will explain what it means.



Blue and underlined words show links to websites and email addresses. You can click on these links on a computer.

What is in this booklet

About this booklet	4
Our involvement plan	5
Our principles.....	7
Our goals	10
How we will achieve our goals	12
Our staff	15
Doctors' (GP) surgeries.....	16
Changing a service	17
Our projects	18
Telling us what you think.....	19
Find out more and contact us	20

About this booklet



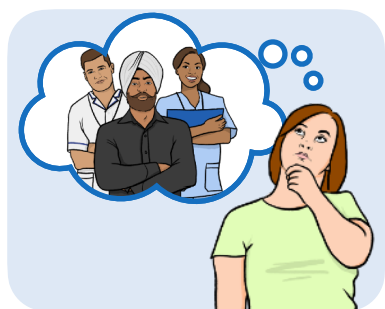
This booklet is from NHS Cheshire and Merseyside.



It is about our **involvement plan** for 2024 to 2026.

Our **involvement plan** explains how we will get people involved in our work in the next 2 years.

Our plan will help us to do things like:



- Help local people and organisations take part in making decisions about local health services.



- Make our health services better for everyone who lives in the local area.

Our involvement plan

We involve people in different ways.
This can include:



1. Giving them information.



2. Asking about their thoughts and ideas.



3. Listening to them, so they can let us know what they think.



4. Using their ideas to help us make choices about what we do.



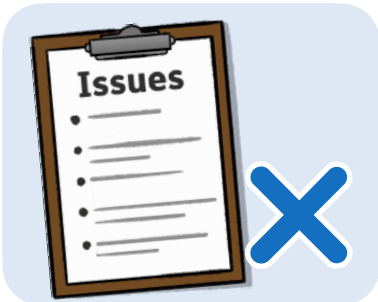
5. **Co-producing** projects with people who have **lived experience**.

Co-producing means working with other groups of people to create the project.

Lived experience is where you have been affected by certain things in your life.



Our involvement plan explains how we will work with local people and organisations.



But it does not include information about every group or issue that we deal with.



We will write extra involvement plans for certain groups and issues that we work with.



Other organisations that we work with will also write their own involvement plans.

Our principles



Our **principles** are the rules and ideas we use to help us make decisions and act in a fair way.

We will follow these principles when we work with local people and groups:



- Make sure that they help us make decisions.



- Work with them from the start of projects until the end and tell them how this has helped.



- Ask them:
 - What they want and need from local health and care services.
 - If the changes we have made are working.



- Build strong relationships so they feel like they can trust us.

We will also follow these principles:



- Work with **Healthwatch** and other local organisations.

Healthwatch helps people speak up about health and care services.



- Share information that is easy to find and understand.



- Make sure that people feel able to help decide what happens in their local community.



- Help them work with health and care services in different ways.



- Work with them to deal with important issues and make services better.

We will also:



- Look at what we do that already works.



- Learn from what other health and care organisations do to involve people.

Our goals



Our goals are things that we want to achieve with our involvement plan.

Our goals are:



1. Make sure that we always involve local people and groups when we make decisions.



2. Make sure that we always listen to **underrepresented** people.

Underrepresented means groups who have not had the same chances to speak up in the past.



3. Offer different ways for people to get involved in our work.



4. Work out what is making it hard for people to get involved so we can make it easier.

We also want to:



5. Write plans to involve people when we work on a new project.



6. Make sure that NHS Cheshire and Merseyside staff understand how and why we are getting people involved in our work.



7. Look for ways to share skills and ideas with other organisations.



8. Show how we use people's ideas to help us make decisions.



9. Work with other health and care organisations to share skills and ideas.

We also want to:



10. Look for ways to share people's ideas with other health and care organisations.

How we will achieve our goals



Each piece of work will affect different groups of people in different ways.

That means that whenever we start a new project, we may need to:



- Involve new people.

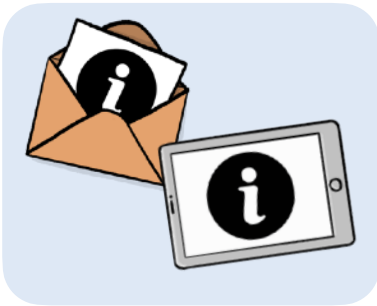


- Look at the way we get people involved, to decide the best way to do it.



We will:

- Listen to what local people think.



- Share information about what we are doing in different ways.



- Work with other health and care organisations.



- Make sure that we have a good system for including people.



We will also **review** our involvement plan.

A **review** is where we check how well the involvement plan is working.

Sharing information

We share information in lots of different ways like:



- On social media websites like Facebook, X (Twitter) and YouTube.



- At our board meetings every 2 months.

People can come along to this meeting, or watch it on the internet.



- In newsletters, where you can complete surveys to tell us what you think.



You can find out how to get involved and sign up for information here: www.cheshireandmerseyside.nhs.uk/get-involved



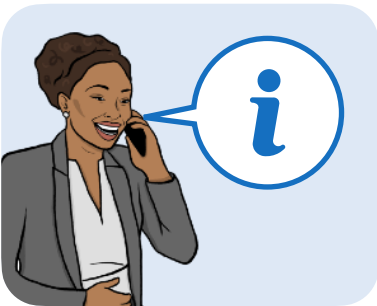
In 2024 and 2025, we will look at ways to share information with people who do not use the internet.

Our staff

We will help our staff members take part in our involvement plan by:



- Telling them about different ways that they can take part.



- Asking them to share information about our involvement plans.



- Providing training on how to get people involved in our work.

Doctors' (GP) surgeries



Local doctors' (GP) surgeries can be great places to get people involved in our work.

We are working with local GP surgeries to help them:



- Get more people involved.



- Work with different groups of people.



This can help us understand how to make our services better for everyone.

Changing a service

If we are thinking about changing a health service, it is important to:



- Get people involved straight away.



- Involve **underrepresented** people.

Remember, **underrepresented** means groups who have not had the same chances to speak up in the past.



- Involve people who have lived experience of using our health and care services.

Our projects

In 2024 and 2025, we will do lots of things to help people get involved in the area like:



- Improving how we learn from people's feedback.



- Looking at how we share ideas for involving people with other organisations.



- Start training our staff members about getting people involved.



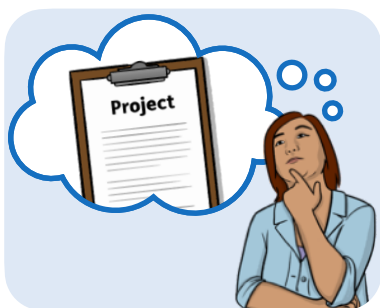
- Decide how to involve people in our Women's Hospital Services in Liverpool project.

Telling us what you think

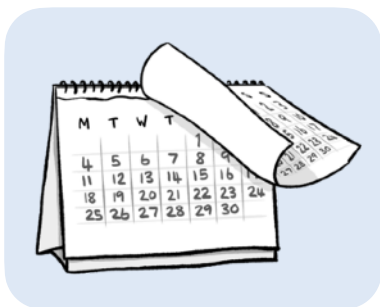


We will write a new involvement plan every 2 years.

After nearly 2 years, we will ask people and organisations to tell us things like:



- What they think about our involvement projects.



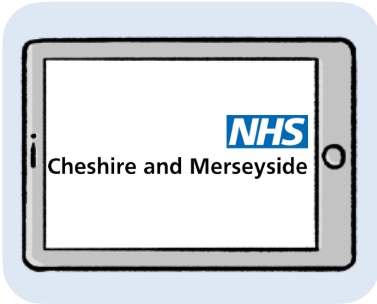
- What they want us to do in the future.



You can tell us what you think about our involvement plan by emailing us at:

engagement@cheshireandmerseyside.nhs.uk

Find out more and contact us

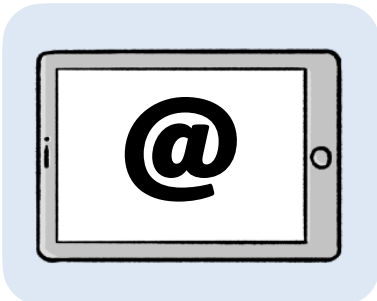


You can look at our website here:
www.cheshireandmerseyside.nhs.uk

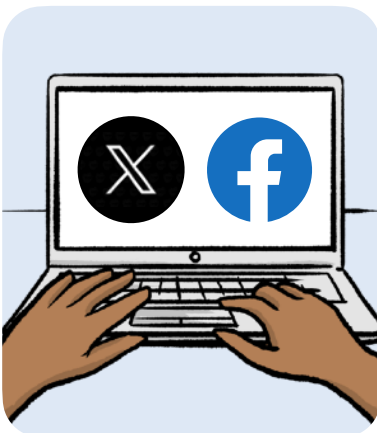
You can contact us by:



- Post:
NHS Cheshire and Merseyside
No 1 Lakeside
920 Centre Park
Warrington
WA1 1QY



- Email:
enquiries@cheshireandmerseyside.nhs.uk



- Social media:
 - X (Twitter):
www.x.com/nhscandm
 - Facebook:
www.facebook.com/nhscandm

This Easy Read booklet was produced by easy-read-online.co.uk