

The background features several overlapping geometric shapes in various shades of blue and purple. A light blue triangle points towards the top right, while a darker purple triangle points towards the bottom right. A vertical blue bar is on the left side, and a dark purple shape is in the bottom left corner.

# **Knowsley Clinical Commissioning Group Commissioning Policy**

Updated 17 July 2024

<b>Ref:</b>	KCCG_2024
<b>Version:</b>	1.14
<b>Purpose</b>	This document is part of a suite of policies that the Integrated Care Board (ICB) uses to drive its commissioning of healthcare. Each policy in that suite is a separate public document in its own right but will be applied with reference to other policies in that suite.
<b>Supersedes:</b>	Version 1.13
<b>Author (inc Job Title):</b>	Midlands and Lancashire Commissioning support Unit – Policy Development Programme
<b>Ratified by: (Name of responsible Committee)</b>	NHS Knowsley Clinical Commissioning Group - Governing Body (June 2019)
<b>Date Ratified/Updated:</b>	17 July 2024
<b>Date Published and where (Intranet or Website):</b>	17 July 2024 (Website)
<b>Review date:</b>	2024-25
<b>Target audience:</b>	All Cheshire & Merseyside NHS organisations

<b>Document control:</b>		
<b>Date:</b>	<b>Version Number:</b>	<b>Section and Description of Change</b>
June 2019-March 2021	1.10	Policy ratified by Knowsley CCG
April 2023	1.11	Policy amended and re-formatted to illustrate removal of policy positions superseded by Cheshire and Merseyside ICB policies 01/04/2023 as referenced and as listed in Appendix 1. Readers should note the following standalone NHS Knowsley CCG commissioning policies are documented separately, outside of this document, these will be subject to review and update as part of the ICB's policy harmonisation programme of work: <ul style="list-style-type: none"> <li>• Continuous Glucose Monitoring</li> <li>• Gluten Free</li> <li>• Pinnaplasty</li> <li>• Subfertility</li> </ul>
September 2023	1.12	Policy document amended to include hyperlinks to ICB policies. (Phase 1)
March 2024	1.13	Policy document amended to include hyperlinks to ICB policies. (Phase 2)
July 2024	1.14	Policy document amended to reinsert unilateral breast reduction policy and alter IFR Team phone number and address.

## Contents

<b>INTRODUCTION</b> .....	<b>6</b>
<b>IFR APPLICATIONS</b> .....	<b>11</b>
<b>GLOSSARY</b> .....	<b>15</b>
<b>POLICY POSITIONS</b> .....	<b>17</b>
<b>1. Complementary Therapies</b> .....	<b>17</b>
<b>B1.1 Complementary Therapies</b> .....	<b>17</b>
<b>2. Dermatology</b> .....	<b>17</b>
<b>B2.1 Skin Resurfacing Techniques (including laser dermabrasion and chemical peels)</b> .....	<b>17</b>
<b>A2.2 Policy for the Removal of Benign Skin Lesions</b> .....	<b>18</b>
<b>B2.4 Treatments for Skin Pigment Disorders</b> .....	<b>18</b>
<b>B2.5 Surgical/Laser Therapy for Viral Warts (excluding Genital Warts) from Secondary Care Providers</b> .....	<b>19</b>
<b>3. Diabetes</b> .....	<b>19</b>
<b>B3.1 Continuous Glucose Monitoring Systems for Continuous Glucose Monitoring in Type 1 Diabetes Mellitus</b> .....	<b>19</b>
<b>4. ENT</b> .....	<b>20</b>
<b>A4.1 Policy for Adenoidectomy</b> .....	<b>20</b>
<b>A4.2 Policy for Pinnaplasty</b> .....	<b>20</b>
<b>A4.3a Policy for Grommets for Glue Ear (Children)</b> .....	<b>20</b>
<b>B4.3b Insertion of Grommets for Glue Ear (Adults)</b> .....	<b>21</b>
<b>A4.4 Policy for Tonsillectomy for Recurrent Tonsillitis</b> .....	<b>21</b>
<b>B4.5 Surgical Remodelling of External Ear Lobe</b> .....	<b>21</b>
<b>B4.6 Use of Sinus X-ray</b> .....	<b>21</b>
<b>A4.7 Policy for Rhinoplasty</b> .....	<b>22</b>
<b>B4.8 Surgery of Laser Treatment of Rhinophyma</b> .....	<b>22</b>
<b>5. Equipment</b> .....	<b>23</b>
<b>B5.1 Use of Lycra Suits</b> .....	<b>23</b>
<b>6. Fertility/Assisted Conception</b> .....	<b>23</b>
<b>B6.1 Infertility Treatment for Subfertility e.g. medicines, Surgical procedures and assisted conception. This also Includes reversal of vasectomy or female sterilisation</b> .....	<b>23</b>
<b>7. General Surgery</b> .....	<b>23</b>
<b>A7.1 Policy for Haemorrhoid Surgery</b> .....	<b>23</b>
<b>A7.2 Policy for Surgery for Treatment of Asymptomatic Incisional and Ventral Hernias and Surgical correction of Diastasis of the Recti</b> .....	<b>23</b>
<b>A7.3 Policy for Surgery for Asymptomatic Gallstones</b> .....	<b>24</b>
<b>B7.4 Lithotripsy for Gallstones</b> .....	<b>24</b>
<b>8. Gynaecology</b> .....	<b>24</b>
<b>A8.1 Policy for Hysterectomy for Heavy Menstrual Bleeding</b> .....	<b>24</b>
<b>A8.2 Policy for Dilatation and Curettage (D&amp;C) for Heavy Menstrual Bleeding in Women</b> .....	<b>25</b>
<b>9. Mental Health</b> .....	<b>25</b>
<b>B9.1 Inpatient Care for Treatment of Chronic Fatigue Syndrome (CFS)</b> .....	<b>25</b>

B9.3	Non-NHS Drug and Alcohol Rehabilitation (non-NHS commissioned services).....	25
A9.4	Policy for Private Mental Health Care .....	25
10.	Neurology .....	26
B10.1	Bobath Therapy .....	26
B10.2	Trophic Electrical Stimulation for Facial/Bells Palsy .....	26
B10.3	Functional Electrical Stimulation (FES).....	26
11.	Ophthalmology.....	26
B11.1	Upper Lid Blepharoplasty - Surgery on the Upper Eyelid .....	26
B11.2	Lower Lid Blepharoplasty - Surgery on the Lower Eyelid .....	27
B11.3	Surgical Treatments for Xanthelasma Palpebrum (fatty deposits on the eyelids).....	28
B11.4	Surgery or Laser Treatment for Short Sightedness (myopia) or Long Sightedness (hypermetropia) .....	28
A11.5	Policy for Cataract Surgery .....	28
B11.6	Coloured (irlens) Filters for Treatment of Dyslexia.....	28
B11.7	Intra Ocular Telescope for Advanced Age-Related Macular Degeneration ...	29
A11.8	Policy for Chalazia Removal.....	29
12.	Oral Surgery .....	29
B12.1	Surgical Replacement of the Temporo- Mandibular Joint, Temporo- Mandibular Joint Dysfunction syndrome & Joint Replacement.....	29
13.	Paediatrics.....	30
B13.1	Cranial Banding for Positional Plagiocephaly.....	30
14.	Plastic Surgery .....	30
A14.1	Policy for Breast Reduction .....	30
A14.2	Policy for Augmentation Mammoplasty - Breast Enlargement .....	31
A14.3	Policy for Removal and/or Replacement of Silicone Implants - Revision of Breast Augmentation .....	32
A14.4	Policy for Mastopexy - Breast Lift .....	32
A14.5	Policy for Surgical Correction of Nipple Inversion .....	33
A14.6	Policy for Male Breast Reduction Surgery for Gynaecomastia.....	33
A14.7	Policy for Hair Removal Treatments .....	34
A14.8	Policy for Surgical Treatment for Pigeon Chest - Pectus Anomaly .....	35
A14.9	Policy for Surgical Revision of Scars .....	35
A14.10	Policy for Laser Tattoo Removal .....	36
A14.11	Abdominoplasty/Apronectomy (sometimes called ‘tummy tuck’) .....	37
A14.12	Policy for Thigh Lift, Buttock Lift and Arm Lift, Excision of Redundant Skin or Fat.....	37
A14.13	Policy for Surgical Treatments for hair Loss.....	37
A14.16	Policy for Labiaplasty, Vaginoplasty and Hymenorrhaphy .....	38
A14.17	Policy for Liposuction.....	39
A14.18	Policy for Rhytidectomy - Face or Brow Lift.....	39
15.	Respiratory .....	39
A15.1	Intervention for Snoring (not OSA) .....	39
16.	Trauma and Orthopaedics.....	39
A16.1	Policy for non-invasive interventions for low Back pain and sciatica.....	40
A16.2	Policy for Imaging for Patients Presenting with Low Back Pain.....	43
A16.3	Policy for Injections for back pain.....	43
A16.4	Policy for Spinal Fusion.....	43
A16.5	Policy for Arthroscopic Shoulder Decompression for Subacromial Shoulder Pain .....	43

A16.6	Policy for Peripheral Nerve-field Stimulation (PNFS) for Chronic Low Back Pain .....	43
A16.7	Policy for Therapeutic endoscopic Division of epidural adhesions .....	44
B16.17	Bone Morphogenetic Proteins, Dibotermis Alfa, Eptotermis Alpha .....	44
A16.18	Policy for Trigger Finger Release.....	44
A16.19	Policy for Hyaluronic Acid and Derivatives Injections for Peripheral joint pain.....	45
B16.20	Secondary Care Administered Steroid Joint Injections.....	45
A16.21	Policy for Dupuytren’s Contracture Release .....	45
A16.23a	Policy for Hip Replacement Surgery.....	45
A16.23b	Policy for Knee Replacement Surgery .....	46
B16.24	Diagnostic Arthroscopy for Arthritis of the Knee .....	46
A16.25	Policy for Knee Arthroscopy with Osteoarthritis .....	46
B16.26	Patient Specific Unicompartmental Knee Replacement .....	46
B16.27	Patient Specific Total Knee Replacement.....	46
A16.28	Policy for Carpal tunnel Syndrome Release .....	47
B16.29	Surgical Removal of Mucooid Cysts at Distal Inter Phalangeal Joint (DIP).....	47
A16.30	Policy for Surgical Removal of Ganglions.....	47
B16.31	Hip Arthroscopy for Femoro– Acetabular Impingement.....	47
B16.32	Surgical Removal of Bunions/Surgery for Lesser Toe Deformity .....	49
B16.33	Surgical Treatment of Morton’s Neuroma.....	49
B16.34	Surgical Treatment of Plantar Fasciitis.....	49
B16.35	Treatment of Tendinopathies (Extracorporeal Shock Wave Therapy; Autologous Blood or Platelet Injection).....	50
A16.36	Policy for Arthroscopic Shoulder Decompression for Subacromial Shoulder Pain .....	50
17.	<b>Urology .....</b>	<b>50</b>
A17.1	Policy for Circumcision for medical reasons only .....	50
B17.3	Reversal of Male Sterilisation .....	51
B17.4	ESWT (extracorporeal shockwave therapy) for Prostadynia or Pelvic Floor Syndrome.....	51
B17.5	Hyperthermia Treatment for Prostadynia or Pelvic Floor Syndrome.....	51
B17.6	Surgery for Prostatism.....	51
18.	<b>Vascular Surgery.....</b>	<b>52</b>
B18.1	Surgery for Extreme Sweating (Hyperhidrosis – all areas; Surgical Resection Endoscopic Thoracic Sympathectomy) .....	52
B18.2	Chelation Therapy for Vascular Occlusions .....	52
A18.3	Policy for Varicose Veins Interventions.....	53
19.	<b>Other .....</b>	<b>53</b>
B19.1	Botulinum Toxin A & B.....	53

## INTRODUCTION

### 1. Purpose and Scope

- 1.1 CCGs are legally obliged to have in place and publish arrangements for making decisions and adopting policies on how particular healthcare interventions are to be accessed. This document is intended to be a statement of such arrangements made by the CCG and will act as a guidance document for patients, clinicians and other referrers in primary and secondary care. It sets out the eligibility criteria under which the CCG will commission stated treatments and procedures.
- 1.2 This Commissioning Policy describes the eligibility criteria under which the CCG will commission treatments or interventions classified as 'Criteria Based Clinical Treatments' (CBCT). The term Criteria Based Clinical Treatments refers to procedures and treatments that are of value, but only in the right clinical circumstances. Previously, they were referred to as Procedures of Low Clinical Priority (PLCP). The policy has been updated following the guidance 'Evidence-Based Interventions: Guidance for CCG's' published in January 2019.
- 1.3 In making these arrangements, the CCG has given regard to relevant legislation and NHS guidance, including their duties under the National Health Service Act 2006, the Health and Social Care Act 2012, Equality legislation – duties discharged under the Public Sector Equality Duty 2011, the National Health Service Commissioning Board and Clinical Commissioning Groups (Responsibilities and Standing Rules) Regulations 2012, the Joint Strategic Needs Assessment, relevant guidance issued by NHS England and the NHS Constitution.

### 2. Context

- 2.1 CCGs have been established under the National Health Service Act 2006 as the statutory bodies charged with the function of commissioning healthcare for patients for whom they are statutorily responsible. CCGs receive a fixed resource allocation from NHS England to enable them to fulfil their duties and have to decide how and where to allocate resources to best meet the healthcare needs of their population.
- 2.2 It is evident that the need and demand for healthcare is greater than the resources available to a society to meet it. As a result, the CCG needs to prioritise its commissioning intentions to ensure their limited resources are allocated effectively and based on the needs of the local population.
- 2.3 The CCG's intention is always to ensure access to NHS resources is equal and fair, whilst considering the needs of the overall population.
- 2.4 Using the criteria as presented in this document, the CCG can prioritise its resources using evidence-based information that determines what is clinically effective and therefore cost effective and likely to provide the greatest proven health gain for the whole of the CCG's population.
- 2.5 The main objective for having a criterion-based Commissioning Policy is to ensure that:

- a. Patients receive appropriate health treatments in the right place and at the right time
  - b. Treatments with no or a very limited clinical evidence base are not routinely undertaken.
- 2.6 This also means that certain procedures will not routinely be commissioned by the CCG unless patients meet the criteria set out in relation to a procedure or treatment or exceptional clinical circumstances can be demonstrated.
- 2.7 The CCG recognises there may be exceptional clinical circumstances where it may be clinically effective to fund any of the procedures listed in this Policy for individual patients where:
- a. The clinical threshold criteria as specified by this Policy is not met; or
  - b. The procedure is not routinely commissioned.
- 2.8 In accordance with the CCG's Individual Funding Request (IFR) process, the patient's circumstances as clinically evidenced in an application made by the patient's clinician will be considered on a case- by-case basis.

### **3. Principles**

- 3.1 Commissioning decisions by CCG Commissioners are made in accordance with the commissioning principles set out as follows:
- a. CCG Commissioners require clear evidence of clinical effectiveness before NHS resources are invested in the treatment
  - b. CCG Commissioner require clear evidence of cost effectiveness before NHS resources are invested in the treatment
  - c. The cost of the treatment for this patient and others within any anticipated cohort is a relevant factor
  - d. CCG Commissioners will consider the extent to which the individual or patient group will gain a benefit from the treatment
  - e. CCG Commissioners will balance the needs of each individual against the benefit which could be gained by alternative investment possibilities to meet the needs of the community
  - f. CCG Commissioners will consider all relevant national standards and take into account all proper and authoritative guidance
  - g. Where a treatment is approved CCG Commissioners will respect patient choice as to where a treatment is delivered
  - h. Commissioning decisions will give 'due regard' to promote equality and uphold human rights. Decision making will follow robust procedures to ensure that decisions are fair and are made within legislative frameworks.

### **4. Core eligibility criteria**

- 4.1 However, there are a number of circumstances where a patient may meet a 'core eligibility criterion' which means they are eligible to be referred for the procedures and treatments listed within this policy, regardless of whether they meet the criteria; or the procedure or treatment is not routinely commissioned.

4.2 These core clinical eligibility criteria are as follows:

- a. Any patient who needs 'urgent' treatment will always be treated.
- b. All NICE Technology Appraisals Guidance (TAG), for patients that meet all the eligible criteria listed in a NICE TAG will receive treatment.
- c. In cancer care (including but not limited to skin, head and neck, breast and sarcoma) any lesion that has features suspicious of malignancy, must be referred to an appropriate specialist for urgent assessment under the 2-week rule.

4.3 NOTE: Funding for all solid and haematological cancers are now the responsibility of NHS England

- a. Reconstructive surgery post cancer or trauma including burns
- b. Congenital deformities: Operations on congenital anomalies of the face and skull are usually routinely commissioned by the NHS. Some conditions are considered highly specialised and are commissioned in the UK through NHSE Specialised Commissioning. As the incidence of some cranio-facial congenital anomalies is small and the treatment complex, specialised teams, working in designated centres and subject to national audit, should carry out such procedures
- c. Tissue degenerative conditions requiring reconstruction and/or restoring function e.g. leg ulcers, dehisced surgical wounds, necrotising fasciitis
- d. For patients wishing to undergo Gender reassignment, this is the responsibility of NHS England and patients should be referred to a Gender Identity Clinic (GIC) as outlined in the Interim NHS England Gender Dysphoria Protocol and Guideline 2013/14.

## 5. Policy Statement

5.1 Not routinely Commissioned (NRC)

5.2 This means the CCG will commission the treatment where the patient meets the specific criteria as set out within this Commissioning Policy. Where a patient does not meet the specific criteria specified the CCG will only commission this treatment for an individual patient where an IFR application, in line with the CCG's IFR process, demonstrates clinical exceptionality.

## 6. Diagnostic Procedures

6.1 Diagnostic procedures to be performed with the sole purpose of determining whether or not a "routinely commissioned" restricted procedure is feasible should not be carried out unless the eligibility criteria are met, or approval has been given by the CCG or GP (as set out in the approval process of the patients responsible CCG) or as agreed by the IFR Panel as a clinically exceptional case.

6.2 Where a General Practitioner/Optomtrist/Dentist requests only an opinion the patient should not be placed on a waiting list or treated, but the opinion given and the patient returned to the care of the General Practitioner/Optomtrist/Dentist, in order for them to make a decision on future treatment.



## **7. Psychological factors**

- 7.1 Only very rarely is surgical intervention likely to be the most appropriate and effective means of alleviating disproportionate psychological distress. In these cases ideally an NHS psychologist with expertise in body image or an NHS Mental Health Professional (depending on locally available services) should detail all treatment(s) previously used to alleviate/improve the patient's psychological wellbeing, their duration and impact. The clinician should also provide evidence to assure the IFR Panel that a patient who has focused their psychological distress on some particular aspect of their appearance is at minimal risk of having their coping mechanism removed by inappropriate surgical intervention.
- 7.2 Psychological assessment and intervention may be appropriate for patients with severe psychological distress in respect of their body image, but it should not be regarded as a route into aesthetic surgery. Any application citing psychological distress will need to be considered as an IFR
- 7.3 Children under 16 are eligible for surgery to alter appearance, improve scars, excise facial or other body lesions where such conditions cause psychological distress.

## **8. CBCT Referral/Treatment Listing Processes**

### **8.1 Primary Care**

- 8.1.1 Referrals for treatment should not be made unless the patient clearly meets the criteria as this can raise unrealistic expectations for the patient and lead to disappointment. If a General Practitioner/Optomtrist/Dentist considers a patient might reasonably fulfil the eligibility criteria for a 'not routinely commissioned', as detailed in this document (i.e. they meet the specific criteria listed for each treatment) the General Practitioner/Optomtrist/Dentist should follow the process for referral. NB. This may be via a referral management or prior approval team.
- 8.1.2 If in doubt over the local process, the referring clinician should contact Knowsley CCG, for guidance. Failure to comply with the local process may delay a decision being made.
- 8.1.3 Any referral letter should include specific information regarding the patient's potential eligibility. If the referral letter does not clearly outline how the patient meets the criteria, then the letter should be returned to the referrer for more information.
- 8.1.4 In cases where there may be an element of doubt the General Practitioner/Optomtrist/Dentist should discuss the case with the Knowsley Clinical Commissioning Group in the first instance.

### **8.2 Secondary Care**

- 8.2.1 The secondary care consultant will also determine whether the procedure is clinically appropriate for a patient and whether the eligibility criteria for the procedure are fulfilled or not. The consultant may also request additional information before seeing the patient.

8.2.2 If a secondary care consultant considers a patient might reasonably fulfil the eligibility criteria for a restricted procedure, as detailed in this document (i.e. they meet the specific criteria listed for each treatment) the consultant should follow the listing process for treatment. NB. For some CCGs this will involve following a process of prior approval. If in doubt over the CCG requirements, the consultant should contact the CCG or the IFR Team for guidance. Failure to comply with the CCG's processes may delay a patient's treatment and/or release of funding resources.

8.2.3 Patients who fulfil the criteria may then be placed on a waiting list according to their clinical need. The patient's notes should clearly reflect exactly how the criteria were fulfilled including prior approval authorisation where relevant. This will allow for case note audit to support contract management.

8.2.4 Should the patient not meet the eligibility criteria this should be recorded in the patient's notes and the consultant should return the referral back to the General Practitioner/Optometrists/Dentist, explaining why the patient is not eligible for treatment.

## 9. Medicines

10.1 Prior approval for treatment should always be sought from the responsible Medicine Management Team when using medicines as follows:

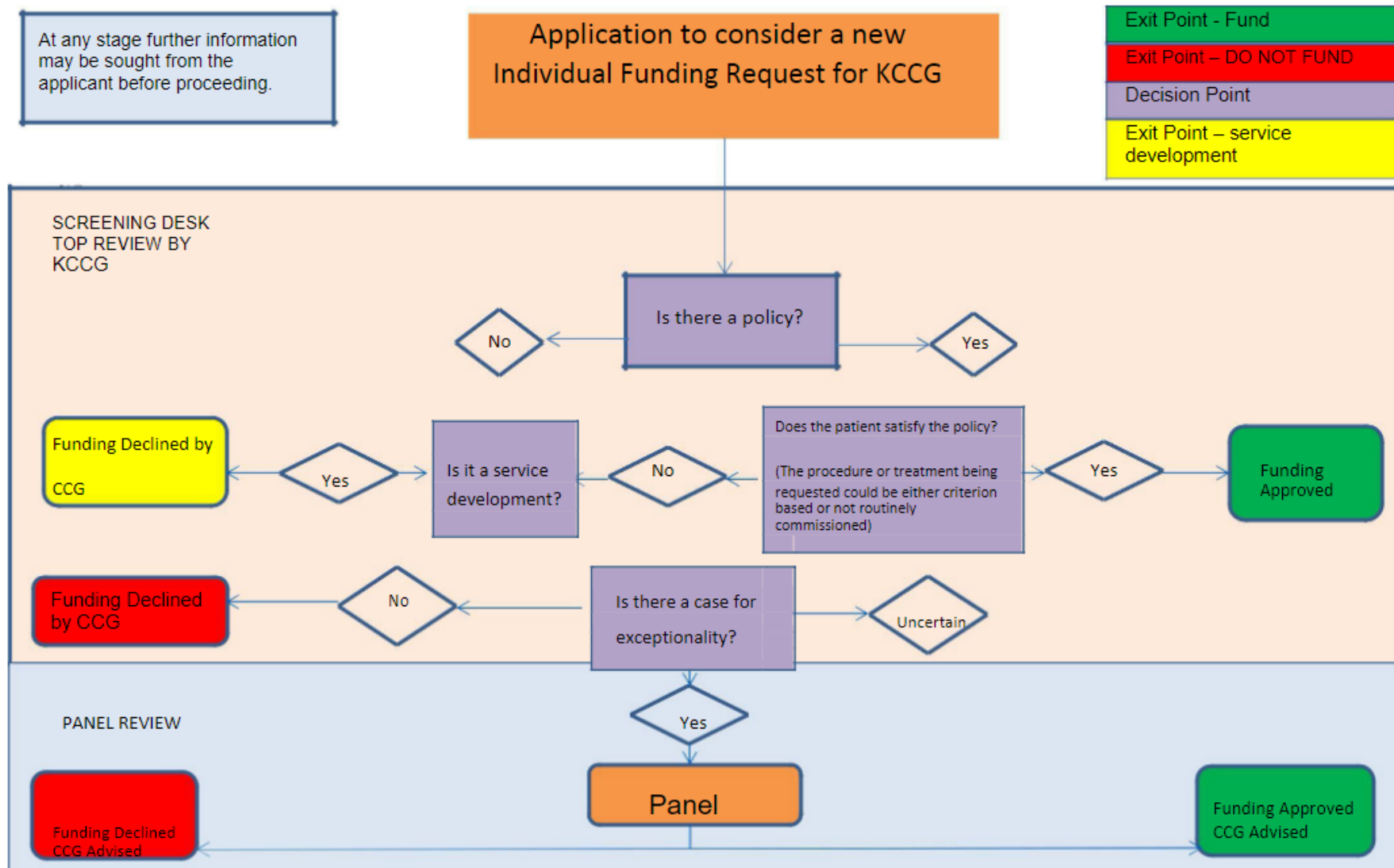
- a. Any new PbR excluded drug where the drug has not yet been approved/prioritised for use in agreement with the local CCG
- b. Any existing PbR excluded drugs to be used outside of previously agreed clinical pathways/indication
- c. Any PbR excluded drugs that are being used out with the parameters set by NICE both in terms of disease scores or drug use. It must not be assumed that a new drug in the same class as one already approved by NICE can be used, this must be subject to the process in Point 1
- d. Any drug used out with NICE Guidance (where guidance is in existence)
- e. Any proposed new drug/new use of an existing drug (whether covered by NICE or PBR excluded or not) should first be approved by the relevant Area Medicines Management Committee, and funding (where needed) agreed in advance of its use by the relevant CCG
- f. Any medicines that are classed by the CCG as being of limited clinical value
- g. Any medicines that will be supplied via a homecare company agreement

## IFR APPLICATIONS

1. Exceptionality is where a patient does not meet all of the criteria outlined for a specific procedure or treatment or, the procedure or treatment is not routinely commissioned.
2. In this scenario, should a patient not fulfil the clinical criteria, but the referring clinician is willing to support the application as clinically exceptional, the case can be referred to the IFR Panel for consideration. The person who fills in the IFR can be a consultant or a GP.
3. In dealing with clinically exceptional requests for an intervention that is considered to be a poor use of NHS resources, the Merseyside CCGs have endorsed through the CCG Alliance the following description of exceptionality contained in a paper by the NW Medicines and Treatment Group:
  - a. The patient has a clinical picture that is significantly different to the general population of patients with that condition; and as a result of that difference; the patient is likely to derive greater benefit from the intervention than might normally be expected for patients with that condition.
4. The CCG is of the opinion that exceptionality should be defined solely in clinical terms. To consider social and other non-clinical factors automatically introduces inequality, implying that some patients have a higher intrinsic social worth than others with the same condition. It runs contrary to a basic tenet of the NHS, namely that people with equal need should be treated equally. Therefore, non-clinical factors will not be considered except where this policy explicitly provides otherwise.
5. The CCG must justify the grounds upon which it is choosing to fund treatment for a particular patient when the treatment is unavailable to others with the condition.
6. Individual Funding Requests (IFR) should only be sent to the respective NHS.net accounts as below. Guidance regarding IFRs and an application form can be found on the CCG website.
7. Individual funding requests will be considered by an IFR panel on behalf of the CCG, but the final decision is that of the CCG.
8. The CCG can choose to agree with the recommendation of the panel, request further information or choose to overrule the panel.
9. IFR contact information follows, however please refer to the CCG IFR policy for more information:

CONFIDENTIAL  
1829 Building – Mail Account  
Individual Funding Request Team (MLCSU)  
Countess of Chester Hospital NHS Foundation Trust  
Liverpool Road, CHESTER, Cheshire CH2 1UL  
Telephone: 01782 916876

The email address for the Individual Funding Request team is: [ifr.manager@nhs.net](mailto:ifr.manager@nhs.net).
10. Process outlined below:



## **11. Clinical Trials**

11.1 The CCG does not expect to provide funding for patients to continue treatment commenced as part of a clinical trial. This is in line with the Medicines for Human Use (Clinical Trials) Regulations 2004 and the Declaration of Helsinki which stipulates that the responsibility for ensuring a clear exit strategy from a trial, and that those benefiting from treatment will have ongoing access to it, lies with those conducting the trial. This responsibility lies with the trial initiators indefinitely.

## **12. Photographic evidence**

12.1 Photographic evidence may be required in cases which are being considered for clinical exceptionality in line with the IFR processes. However, photographic evidence will not be accepted for consideration unless it is impossible to make the case in any other way.

12.2 The decision to submit photographic evidence remains with the patient and responsible clinician and must meet the CCG's criteria for submission as outlined by the CCGs IFR Policy.

12.3 If photographs are accepted for consideration in accordance with the CCG's criteria, they will be examined by clinical members of the IFR team. In the course of the work for the case the applicant should be aware that other members of the IFR Panel, IFR Process Reviews Panel or IFR team who prepare the papers may need to handle or see the photographs.

## **13. Personal data**

13.1 In making referrals to the IFR Team, clinicians and other referrers in primary and secondary care should bear in mind their obligations under the Data Protection Act 1998 and their duty of confidence to patients. Where information about patients (including photographs) is sent to the IFR Team and is lost or inadvertently disclosed to a third party before it is safely received by the IFR Team, the referrer will be legally responsible for any breach of the Data Protection Act 1998 or the law of confidence. Therefore, please consider taking the following precautions when using the Royal Mail to forward any information about patients including photographic evidence:

13.1.1 Clearly label the envelope to a named individual i.e. first name & surname, and job title.

13.1.2 Where your contact details are not on the items sent, include a compliment slip indicating the sender and their contact details in the event of damage to the envelope or package.

13.1.3 Use the Royal Mail Signed for 1<sup>st</sup> Class service, rather than the ordinary mail, to reduce the risk of the post going to the wrong place or getting lost.

13.1.4 Costs incurred will be the responsibility of the referrer, this includes photographic evidence.

#### **14. Copies of this policy**

14.1 Electronic copies of this policy can be found on the websites of the CCG. Alternatively, you may contact the CCG and ask for a copy of the Commissioning Policy 2019-21.

#### **15. Monitoring and review**

15.1 This policy will be subject to continued monitoring using a mix of the following approaches:

- a. Prior approval process
- b. Post activity monitoring through routine data
- c. Post activity monitoring through case note audits

15.2 This policy will be kept under regular review, to ensure that it reflects developments in the evidence base regarding clinical and cost effectiveness.

15.3 From time to time, CCG may need to make commissioning decisions that may suspend some treatments/criteria currently specified within this policy.

#### **16. Evidence**

16.1 At the time of publication the evidence presented per procedure/treatment was the most current available. Where reference is made to older publications these still represents the most up to date view.

## GLOSSARY

Term	Meaning
<b>Analgesics</b>	Painkillers.
<b>Asymptomatic</b>	Without symptoms.
<b>Augmentation</b>	Increasing in size, for example breast augmentation.
<b>Benign</b>	Does not invade surrounding tissue or spread to other parts of the body; it is not a cancer.
<b>Binocular vision</b>	Vision in both eyes.
<b>Body Mass Index (BMI)</b>	Body Mass Index - a measure that adults can use to see if they are a healthy weight for their height.
<b>CCG</b>	Clinical Commissioning Group. CCGs are groups of General Practices that work together to plan and design local health services in England. They do this by 'commissioning' or buying health and care services.
<b>Chronic</b>	Persistent
<b>Co-morbidities</b>	Other risk factors alongside the primary problem.
<b>Congenital</b>	Present from birth
<b>Conservative treatment</b>	The management and care of a patient by less invasive means; these are usually non-surgical
<b>DOH</b>	Department of Health
<b>Eligibility/Threshold</b>	Whether someone qualifies. In this case, the minimum criteria to access a procedure.
<b>Exceptional clinical circumstances</b>	A patient who has clinical circumstances which, taken as a whole, are outside the range of clinical circumstances presented by a patient within the normal population of patients, with the same medical condition and at the same stage of progression as the patient.
<b>Functional health problem/difficulty/impairment</b>	Difficulty in performing, or requiring assistance from another to perform, one or more activities of daily living.
<b>GP</b>	General Practitioner.
<b>Histology</b>	The structure of cells or tissue under a microscope.
<b>Individual Funding Request (IFR)</b>	A request received from a provider or a patient with explicit support from a clinician, which seeks funding for a single identified patient for a specific treatment.
<b>Irreducible</b>	Unable to be reduced.

<b>Term</b>	<b>Meaning</b>
<b>Malignant/malignancy</b>	Harmful.
<b>Monocular vision</b>	Vision in one eye only.
<b>Multi-disciplinary</b>	Involving several professional specialisms for example in a multi-disciplinary team (MDT).
<b>NICE guidance</b>	The guidance published by the National Institute for Health and Care Excellence.
<b>Not routinely funded (a procedure)</b>	This means the CCG will only fund the treatment if an Individual Funding Request (IFR) application proves exceptional clinical need and that is supported by the CCG.
<b>NSAIDS</b>	Non-steroidal anti-inflammatory drugs – medication that reduces pain, fever and inflammation.
<b>Paediatric(ian)</b>	Medical care concerning infants, children and adolescents usually under 18.
<b>Pathology/pathological</b>	The way a disease or condition works or behaves. This may for example include examination of bodily fluids or tissue e.g. blood testing.
<b>PCT</b>	Primary Care Trust (PCTs were abolished on 31 March 2013 and replaced by Clinical Commissioning Groups).
<b>PLCP</b>	Procedures of Lower Clinical Priority; routine procedures that are of value, but only in the right circumstances.
<b>Precipitates</b>	Brings about/triggers.
<b>Primary care</b>	a patient's first point of interaction with NHS services e.g. a GP surgery.
<b>Rationale</b>	Explanation of the reason why.
<b>Restricted (a procedure)</b>	This means CCG will fund the treatment if the patient meets the stated clinical threshold for care.
<b>Secondary care</b>	Services provided by medical specialists, who generally do not have the first contact with a patient e.g. hospital services.
<b>Stakeholders</b>	Individuals, groups or organisations who are or will be affected by this consultation, e.g. patients who currently use the service, carers, specific patient groups, etc.
<b>Symptomatic</b>	Something causing or exhibiting symptoms.



# POLICY POSITIONS

A = Last reviewed 2019/21

B = Last reviewed 2014/15

## 1. Complementary Therapies

<b>B1.1 Complementary Therapies</b>
<p>This policy has been superseded by NHS Cheshire &amp; Merseyside ICB Policy: <a href="#">CMICB Clin067 – Complementary and alternative therapies</a></p>

## 2. Dermatology

<b>B2.1 Skin Resurfacing Techniques (including laser dermabrasion and chemical peels)</b>	
<b>Eligibility Criteria</b>	<p>Only be commissioned in the following circumstances:</p> <p><u>Severe</u> scarring following:</p> <p>Acne once the active disease is controlled.</p> <p>Chicken pox. OR Trauma (including post-surgical).</p> <p>Procedures will only be performed on the head and neck area.</p> <p>Non-core procedure Interim Gender Dysphoria Protocol &amp; Service Guidelines 2013/14.</p> <p>Where the provision of “non-core” surgeries is appropriate, the GIC should apply for treatment funding through the CCG; the GIC should endeavour to work in partnership with the CCG.</p>

<b>B2.1 Skin Resurfacing Techniques (including laser dermabrasion and chemical peels)</b>	
<b>Evidence</b>	<p>Modernisation Agency’s Action on Plastic Surgery 2005.</p> <p>Haedersdal, M., Togsverd-Bo, K., &amp; Wulf, H. (2008). Evidence-based review of lasers, light sources and photodynamic therapy in the treatment of acne vulgaris. <i>Journal of the European Academy of Dermatology and Venereology</i>, 22, 267–78.</p> <p>Department of Dermatology, Bispebjerg Hospital, University of Copenhagen, Copenhagen, Denmark. Collated on NHS evidence website suggests that short-term efficacy from optical treatments for acne vulgaris with the most consistent outcomes for PDT.</p> <p><a href="http://www.evidence.nhs.uk">www.evidence.nhs.uk</a></p> <p>Interim Gender Dysphoria Protocol &amp; Service Guidelines 2013/14.</p> <p><a href="#">NHS England Interim protocol</a> NHS England (2013) Pages 13 &amp; 14 describe non-core NHS England &amp; CCG commissioning responsibilities.</p>

<b>A2.2 Policy for the Removal of Benign Skin Lesions</b>
<p>This policy has been superseded by NHS Cheshire &amp; Merseyside ICB Policy: <a href="#">CMICB Clin005 – Benign skin lesions</a></p>

<b>B2.4 Treatments for Skin Pigment Disorders</b>
<p>This policy has been superseded by NHS Cheshire &amp; Merseyside ICB Policy: <a href="#">CMICB Clin009 – Camouflage Treatment for Skin Pigmentation and other disorders</a></p>

<b>B2.5 Surgical/Laser Therapy for Viral Warts (excluding Genital Warts) from Secondary Care Providers</b>	
<b>Eligibility Criteria</b>	<p>Will be commissioned in any of the following circumstances:</p> <p>Severe pain substantially interfering with functional abilities.                      Persistent and spreading after 2 years and refractive to at least 3 months of primary care or community treatment.                      Extensive warts (particularly in the immune-suppressed patient).                      Facial warts.                      Patients with the above exceptional symptoms may need specialist assessment, usually by a dermatologist.</p>
<b>Evidence</b>	<p>Modernisation Agency's Action on Plastic Surgery 2005.</p> <p><a href="#">Nongenital warts: recommended approaches to management</a> Prescriber 2007 18(4) p33-44.</p> <p><a href="#">Health Commission Wales. 2008 Commissioning Criteria – Plastic Surgery. Procedures of Low Clinical Priority/ Procedures not usually available on the National Health Service</a></p> <p><a href="http://patient.co.uk/doctor/viral-warts-excluding-verrucae">patient.co.uk/doctor/viral-warts-excluding-verrucae</a></p> <p><a href="http://www.patient.co.uk/doctor/verrucae">http://www.patient.co.uk/doctor/verrucae</a></p>
<b>Comments</b>	<p>Most viral warts will clear spontaneously or following application of topical treatments.</p> <p>65% are likely to disappear spontaneously within 2 years.</p> <p>There are numerous OTC preparations available.</p> <p>Community treatments such a cryosurgery, curettage, prescription only topical treatment should be considered before referral to secondary care.</p>

### 3. Diabetes

<b>B3.1 Continuous Glucose Monitoring Systems for Continuous Glucose Monitoring in Type 1 Diabetes Mellitus</b>
---

### **B3.1 Continuous Glucose Monitoring Systems for Continuous Glucose Monitoring in Type 1 Diabetes Mellitus**

This policy has been superseded as follows:

*At the NHS Cheshire & Merseyside ICB Board Meeting held on [27 October 2022](#), it was agreed that the former CCG commissioning policies in respect of CGMs be retired, and the recommendations within NICE guidance NG17, NG18 and NG28 be adopted.*

## **4. ENT**

### **A4.1 Policy for Adenoidectomy**

This policy has been superseded by NHS Cheshire & Merseyside ICB Policy: [CMICB Clin002 – Adenoidectomy](#)

### **A4.2 Policy for Pinnaplasty**

See Knowsley CCG standalone [policy](#)

### **A4.3a Policy for Grommets for Glue Ear (Children)**

This policy has been superseded by NHS Cheshire & Merseyside ICB Policy: [CMICB Clin023 – Grommets for glue ear in children](#)

<b>B4.3b Insertion of Grommets for Glue Ear (Adults)</b>	
<b>Eligibility Criteria</b>	<p>Grommets in adults with OME will be funded only in the following circumstances:</p> <ul style="list-style-type: none"> <li>• Significant negative middle ear pressure measured on two sequential appointments.</li> </ul> <p>AND</p> <ul style="list-style-type: none"> <li>• Significant ongoing associated pain.</li> </ul> <p>OR</p> <p>Unilateral middle ear effusion where a post nasal space biopsy is required to exclude an underlying malignancy.</p>
<b>Evidence</b>	<p><a href="http://www.rcseng.ac.uk/healthcarebodies/docs/published-guides/ome">http://www.rcseng.ac.uk/healthcarebodies/docs/published-guides/ome</a>                      Royal College of Surgeons (2013).  <a href="http://www.england.nhs.uk/wpcontent/uploads/2013/11/N-SC015.pdf">http://www.england.nhs.uk/wpcontent/uploads/2013/11/N-SC015.pdf</a></p>

<b>A4.4 Policy for Tonsillectomy for Recurrent Tonsillitis</b>
<p>This policy has been superseded by NHS Cheshire &amp; Merseyside ICB Policy:  <a href="#">CMICB Clin046 – Tonsillectomy</a></p>

<b>B4.5 Surgical Remodelling of External Ear Lobe</b>
<p>This policy has been superseded by NHS Cheshire &amp; Merseyside ICB Policy:  <a href="#">CMICB Clin45 – Split (cleft) Earlobe, surgical repair</a></p>

<b>B4.6 Use of Sinus X-ray</b>
<p>This policy has been superseded by NHS Cheshire &amp; Merseyside ICB Policy:  <a href="#">CMICB Clin44 – Sinus X-Ray</a></p>

<b>A4.7 Policy for Rhinoplasty</b>	
<b>Policy Statement</b>	<p><b>Not routinely commissioned</b></p> <p>a) Rhinoplasty is not routinely commissioned for cosmetic reasons.</p> <p>b) Rhinoplasty is restricted for non-cosmetic/other reasons e.g. a septoplasty.</p>
<b>Eligibility Criteria</b>	<p>The CCG will fund this treatment if the patient meets the following criteria:</p> <ul style="list-style-type: none"> <li>• Documented medical breathing problems caused by obstruction of the nasal airway <b>OR</b></li> <li>• Correction of complex congenital conditions e.g. Cleft lip and palate</li> </ul> <p>This means <b>(for patients who DO NOT meet the above criteria or require the procedure for cosmetic reasons)</b> the CCG will <b>only</b> fund the treatment if an Individual Funding Request (IFR) application proves exceptional clinical need and that is supported by the CCG.</p>
<b>Rationale</b>	<p>This is because if you have a blocked nose because your nasal bones are crooked or damaged, or the bone and cartilage between your nostrils is deviated (bent) a septoplasty can improve how you breathe.</p>
<b>Evidence for inclusion and threshold</b>	<p>Royal College of Surgeons – Rhinoplasty Guide Weblink:  <a href="https://www.rcseng.ac.uk/patient-care/cosmetic-surgery/about-your-procedure/nose-job/">https://www.rcseng.ac.uk/patient-care/cosmetic-surgery/about-your-procedure/nose-job/</a></p>

<b>B4.8 Surgery of Laser Treatment of Rhinophyma</b>	
<p style="color: red;">This policy has been superseded by NHS Cheshire &amp; Merseyside ICB Policy:  <a href="#">CMICB Clin41 - Rhinophyma, surgical management</a></p>	

## 5. Equipment

### B5.1 Use of Lycra Suits

This policy has been superseded by NHS Cheshire & Merseyside ICB Policy:  
[CMICB Clin071 – Lycra™ Suits and Orthotics \(Dynamic Elastomeric Fabric Orthoses\)](#)

## 6. Fertility/Assisted Conception

### B6.1 Infertility Treatment for Subfertility e.g. medicines, Surgical procedures and assisted conception. This also Includes reversal of vasectomy or female sterilisation

See separate standalone CCG document - [Assisted Conception / Subfertility Policy](#).

## 7. General Surgery

### A7.1 Policy for Haemorrhoid Surgery

This policy has been superseded by NHS Cheshire & Merseyside ICB Policy:  
[CMICB Clin024 – Haemorrhoids, surgical management](#)

### A7.2 Policy for Surgery for Treatment of Asymptomatic Incisional and Ventral Hernias and Surgical correction of Diastasis of the Recti

This policy has been superseded by NHS Cheshire & Merseyside ICB Policy:  
[CMICB Clin083 – Minimally symptomatic inguinal hernia repair](#)  
[CMICB Clin014 – Diastasis \(divarication\) of the Recti Repair](#)

### A7.3 Policy for Surgery for Asymptomatic Gallstones

This policy has been superseded by NHS Cheshire & Merseyside ICB Policy:  
[CMICB Clin021 – Gallstones \(Asymptomatic\), Surgical Management](#)

### B7.4 Lithotripsy for Gallstones

<b>Eligibility Criteria</b>	Lithotripsy not routinely commissioned.
<b>Evidence</b>	
<b>Comments</b>	Lithotripsy rarely performed as rate recurrence high.

## 8. Gynaecology

### A8.1 Policy for Hysterectomy for Heavy Menstrual Bleeding

This policy has been superseded by NHS Cheshire & Merseyside ICB Policy:  
[CMICB Clin026 – Heavy Menstrual Bleeding, Hysterectomy](#)



### **A8.2 Policy for Dilatation and Curettage (D&C) for Heavy Menstrual Bleeding in Women**

This policy has been superseded by NHS Cheshire & Merseyside ICB Policy:  
[CMICB Clin025 - Heavy Menstrual Bleeding, Dilatation and Curettage](#)

## **9. Mental Health**

### **B9.1 Inpatient Care for Treatment of Chronic Fatigue Syndrome (CFS)**

This policy has been superseded by NHS Cheshire & Merseyside ICB Policy:  
[CMICB Clin066 – Chronic fatigue syndrome/Myalgic Encephalomyelitis \(CFS/ME\): Inpatient Management](#)

### **B9.3 Non-NHS Drug and Alcohol Rehabilitation (non-NHS commissioned services)**

This policy has been superseded by NHS Cheshire & Merseyside ICB Policy:  
[CMICB Clin072 – Private Drug and Alcohol Rehabilitation](#)

### **A9.4 Policy for Private Mental Health Care**

This policy has been superseded by NHS Cheshire & Merseyside ICB Policy:  
[CMICB Clin073 – Mental health disorders, specialist, general and non-NHS services](#)

## 10. Neurology

<b>B10.1 Bobath Therapy</b>
This policy has been superseded by NHS Cheshire & Merseyside ICB Policy: <a href="#">CMICB Clin063 – Bobath Therapy</a>

<b>B10.2 Trophic Electrical Stimulation for Facial/Bells Palsy</b>
This policy has been superseded by NHS Cheshire & Merseyside ICB Policy: <a href="#">CMICB Clin062 – Idiopathic Facial Paralysis (Bell’s Palsy) -Trophic Electrical Stimulation</a>

<b>B10.3 Functional Electrical Stimulation (FES)</b>
This policy has been superseded by NHS Cheshire & Merseyside ICB Policy: <a href="#">CMICB Clin064 – Foot Drop, Functional Electrical Stimulation (FES)</a>

## 11. Ophthalmology

<b>B11.1 Upper Lid Blepharoplasty - Surgery on the Upper Eyelid</b>	
<b>Eligibility Criteria</b>	Only commissioned in the following circumstances: Eyelid function interferes with visual field.

**B11.1 Upper Lid Blepharoplasty - Surgery on the Upper Eyelid**

<p><b>Evidence</b></p>	<p><a href="#">Eyelid Surgery</a>  <i>The British Association of Aesthetic Plastic Surgeons 2011.</i></p> <p>Modernisation Agency’s Action on Plastic Surgery 2005.  <a href="#">Procedures of Limited Clinical Effectiveness Phase 1 - Consolidation and repository of the existing evidence-base</a>          London Health Observatory 2010.</p>
<p><b>Comments</b></p>	<p>Excess skin in the upper eyelids can accumulate due to the ageing and is thus normal.</p> <p>Hooded lids causing significant functional impaired vision confirmed by an appropriate specialist can warrant surgical treatment.          Impairment to visual field to be documented.</p>

**B11.2 Lower Lid Blepharoplasty - Surgery on the Lower Eyelid**

<p><b>Eligibility Criteria</b></p>	<p>Only commissioned in any of the following circumstances:</p> <ul style="list-style-type: none"> <li>• Correction of ectropion or entropion which threatens the health of the affected eye.</li> <li>• Removal of lesions of eyelid skin or lid margin.</li> <li>• Rehabilitative surgery for patients with thyroid eye disease.</li> </ul>
<p><b>Evidence</b></p>	<p><a href="#">Eyelid Surgery</a>          The British Association of Aesthetic Plastic Surgeons 2011.          Local PCT consensus – review conducted 2007.          Modernisation Agency’s Action on Plastic Surgery 2005.  <a href="#">Procedures of Limited Clinical Effectiveness Phase 1 - Consolidation and repository of the existing evidence-base</a> - London Health Observatory 2010.</p>

### **B11.2 Lower Lid Blepharoplasty - Surgery on the Lower Eyelid**

#### **Comments**

Excessive skin in the lower lid may cause “eye bags” but does not affect function of the eyelid or vision and therefore does not need correction.

### **B11.3 Surgical Treatments for Xanthelasma Palpebrum (fatty deposits on the eyelids)**

This policy has been superseded by NHS Cheshire & Merseyside ICB Policy:  
[CMICB Clin005 – Benign skin lesions](#)

### **B11.4 Surgery or Laser Treatment for Short Sightedness (myopia) or Long Sightedness (hypermetropia)**

This policy has been superseded by NHS Cheshire & Merseyside ICB Policy:  
[CMICB Clin034 - Myopia, Hyperopia and Astigmatism, Laser Treatment](#)

### **A11.5 Policy for Cataract Surgery**

This policy has been superseded by NHS Cheshire & Merseyside ICB Policy:  
[CMICB Clin097 – Cataract Surgery](#)

### **B11.6 Coloured (irlens) Filters for Treatment of Dyslexia**

This policy has been superseded by NHS Cheshire & Merseyside ICB Policy:  
[CMICB Clin017 - Visual stress and reading difficulties treatment using coloured filters or lenses](#)

--

**B11.7 Intra Ocular Telescope for Advanced Age-Related Macular Degeneration**

This policy has been superseded by NHS Cheshire & Merseyside ICB Policy:  
[CMICB\\_Clin003 - Age-Related Macular Degeneration \(AMD\), implantable miniature telescope \(IMT\)](#)

**A11.8 Policy for Chalazia Removal**

This policy has been superseded by NHS Cheshire & Merseyside ICB Policy:  
[CMICB\\_Clin011 - Chalazia \(meibomian cysts\), removal](#)

## 12. Oral Surgery

**B12.1 Surgical Replacement of the Temporo- Mandibular Joint, Temporo-Mandibular Joint Dysfunction syndrome & Joint Replacement**

This policy has been superseded by NHS Cheshire & Merseyside ICB Policy:  
[CMICB\\_Clin093 – Temporomandibular joint, surgical replacement](#)

## 13. Paediatrics

### B13.1 Cranial Banding for Positional Plagiocephaly

This policy has been superseded by NHS Cheshire & Merseyside ICB Policy:  
[CMICB Clin039 - Positional Plagiocephaly/brachycephaly in children, helmet therapy](#)

## 14. Plastic Surgery

### A14.1 Policy for Breast Reduction

This policy for bilateral breast reduction has been superseded by NHS Cheshire & Merseyside ICB Policy: [CMICB Clin007 – Breast Reduction](#)

#### 14.1b Unilateral Breast Reduction Surgery: Breast Asymmetry

Unilateral breast reduction is considered for asymmetric breasts as opposed to breast augmentation if there is an impact on health as per the criteria below:

- The woman has received a full package of supportive care from their GP such as advice on weight loss and managing pain.
- In cases of thoracic/ shoulder girdle discomfort, a physiotherapy assessment has been provided
- Breast size results in functional symptoms that require other treatments/interventions (e.g. intractable candidal intertrigo; thoracic backache/kyphosis where a professionally fitted bra has not helped with backache, soft tissue indentations at site of bra straps).
- Body mass index (BMI) is <27 and stable for at least twelve months.
- Woman must be provided with written information to allow her to balance the risks and benefits of breast surgery.
- Women should be informed that smoking increases complications following breast reduction surgery and should be advised to stop smoking.
- Women should be informed that breast surgery for hypermastia can cause permanent loss of lactation.

Surgery will not be funded for cosmetic reasons. Surgery can be approved for a difference of 150 - 200gms size as measured by a specialist. The BMI needs to be <27 and stable for at least twelve months.

Resection weights, for unilateral breast reduction should be recorded for audit purposes.

This recommendation does not apply to therapeutic mammoplasty for breast cancer treatment or contralateral (other side) surgery following breast cancer

surgery, and local policies should be adhered to. The Association of Breast Surgery support contralateral surgery to improve cosmesis as part of the reconstruction process following breast cancer treatment.

## A14.2 Policy for Augmentation Mammoplasty - Breast Enlargement

<b>Eligibility Criteria</b>	<p>Augmentation Mammoplasty will be funded if the patient meets ALL of the following criteria:</p> <ul style="list-style-type: none"> <li>• There is congenital absence of breast tissue unilaterally of three or more cup size difference as measured by a specialist. AND</li> <li>• The patient’s BMI is under 25 and has been stable for at least 12 months AND</li> <li>• Aged over 18 years old.</li> </ul>
<b>Evidence for inclusion and threshold</b>	<p>NICE CG80 - Early and locally advanced breast cancer: diagnosis and treatment (2009).                  Weblink: <a href="https://www.nice.org.uk/guidance/cg80">https://www.nice.org.uk/guidance/cg80</a></p> <p>NICE Quality Standard 12 – Breast Cancer (2016) Weblink: <a href="https://www.nice.org.uk/guidance/qs12">https://www.nice.org.uk/guidance/qs12</a></p> <p>British Association of Plastic Reconstructive and Aesthetic Surgeons – Oncoplastic Breast Reconstruction Best Practice Guidelines (2012) Weblink: <a href="http://www.bapras.org.uk/docs/default-source/commissioning-and-policy/final-oncoplastic-guidelines---healthcare-professionals.pdf?sfvrsn=0">http://www.bapras.org.uk/docs/default-source/commissioning-and-policy/final-oncoplastic-guidelines---healthcare-professionals.pdf?sfvrsn=0</a></p> <p>Breast Cancer Care – Breast Reconstruction Weblink: <a href="https://www.breastcancercare.org.uk/information-support/facing-breast-cancer/going-through-treatment-breast-cancer/surgery/breast-reconstruction">https://www.breastcancercare.org.uk/information-support/facing-breast-cancer/going-through-treatment-breast-cancer/surgery/breast-reconstruction</a></p> <p>Dixon, J, et al, 1994, <a href="#">ABC of breast diseases: congenital problems and aberrations of normal breast development and involution</a>, Br Med J, 309, 24 September, 797-800</p> <p>Freitas, R, et al, 2007, <a href="#">Poland’s Syndrome: different clinical presentations and surgical reconstructions in 18 cases</a>, Aesthet Plast Surg, 31, 140-46.</p> <p>Heimberg, D, et al, 1996, <a href="#">The tuberous breast deformity: classification and treatment</a>, Br J Plast Surg, 49, 339-45.</p> <p>Pacifico, M, et al, 2007, <a href="#">The tuberous breast revisited</a>, J Plast Reconstruct Aesthet Surg, 60, 455-64.</p> <p>North Derbyshire, South Derbyshire and Bassetlaw Commissioning Consortium, 2007, Norcom commissioning policy – specialist plastic surgery procedures”, 5-7.  <a href="http://modern.gov.rotherham.gov.uk/documents/s14201/Plastic%20Surgery%20report.pdf">modern.gov.rotherham.gov.uk/documents/s14201/Plastic%20Surgery%20report.pdf</a></p> <p>Sadove, C, et al, 2005, <a href="#">Congenital and acquired pediatric breast anomalies: a review of 20 years experience</a>, Plast Reconstruct Surg, April, 115(4), 1039-1050.</p> <p><a href="#">Health Commission Wales. 2008 Commissioning Criteria – Plastic Surgery. Procedures of Low Clinical Priority/ Procedures not usually available on the National Health Service</a></p>

<b>A14.3 Policy for Removal and/or Replacement of Silicone Implants - Revision of Breast Augmentation</b>	
<b>Eligibility Criteria</b>	<p>Removal and/or replacement of silicone implants is not routinely commissioned.</p> <p>The removal of <b>ruptured</b> silicone implants will only be commissioned in the following circumstances:</p> <p>Where a patient has implants that have ruptured or failed, the patient should be referred back to the provider of the implants. If the clinic no longer exists or refuses to remove the implants, the NHS will remove ruptured implants or implants that have failed only, but will <b>not</b> replace them.</p>
<b>Evidence for inclusion and threshold</b>	<p><a href="#">Poly Implant Prothèse (PIP) breast implants: final report of the Expert Group</a> Department of Health (June 2012). NHS Choices: PIP breast implants <a href="http://www.nhs.uk/Conditions/PIP-implants/Pages/Introduction.aspx">http://www.nhs.uk/Conditions/PIP-implants/Pages/Introduction.aspx</a></p> <p>NHS Choices: Breast Enlargement <a href="http://www.nhs.uk/Conditions/cosmetic-treatments-guide/Pages/breast-enlargement.aspx">http://www.nhs.uk/Conditions/cosmetic-treatments-guide/Pages/breast-enlargement.aspx</a> Health Commission Wales. 2008 Commissioning Criteria – Plastic Surgery. Procedures of Low Clinical Priority/ <a href="#">Procedures not usually available on the National Health Service</a></p>

<b>A14.4 Policy for Mastopexy - Breast Lift</b>
<p><b>This policy has been superseded by NHS Cheshire &amp; Merseyside ICB Policy:</b> <a href="#">CMICB Clin030 – Mastopexy (breast lift)</a></p>



### A14.5 Policy for Surgical Correction of Nipple Inversion

This policy has been superseded by NHS Cheshire & Merseyside ICB Policy:  
[CMICB Clin035 – Nipple inversion, surgical correction](#)

### A14.6 Policy for Male Breast Reduction Surgery for Gynaecomastia

#### Eligibility Criteria

Not routinely commissioned except on an exceptional basis where all of the following criteria are met: True gynaecomastia not just adipose tissue.  
 AND  
 Underlying endocrine or liver abnormality excluded.  
 AND  
 Not due to recreational use of drugs such as steroids or cannabis or other supplements known to cause this.  
 AND  
 Not due to prescribed drug use.  
 AND  
 Has not responded to medical management for at least three months e.g. tamoxifen.  
 AND  
 Post pubertal.  
 AND  
 BMI <25kg/m<sup>2</sup> and stable for at least 12 months.  
 AND  
 Patient experiences persistent pain.  
 AND  
 Experiences significant functional impairment.  
 AND

<b>A14.6 Policy for Male Breast Reduction Surgery for Gynaecomastia</b>	
	In cases of idiopathic gynaecomastia in men under the age of 25 then a period of at least 2 years has been allowed for natural resolution.
<b>Evidence for inclusion and threshold</b>	<p>Dickson, G. (2012). Gynecomastia. <i>American Family Physician</i>, 85(7), 716–722. Retrieved from: <a href="http://www.aafp.org/afp/2012/0401/p716.pdf">http://www.aafp.org/afp/2012/0401/p716.pdf</a></p> <p>NHS Choices: Breast Reduction (male) <a href="http://www.nhs.uk/Conditions/cosmetic-treatments-guide/Pages/breast-reduction-male.aspx">http://www.nhs.uk/Conditions/cosmetic-treatments-guide/Pages/breast-reduction-male.aspx</a></p> <p><a href="#">Health Commission Wales. 2008 Commissioning Criteria – Plastic Surgery. Procedures of Low Clinical Priority/ Procedures not usually available on the National Health Service</a></p>
<b>A14.7 Policy for Hair Removal Treatments</b>	
<b>Eligibility Criteria</b>	<p>Routinely commissioned in the case of those undergoing treatment for pilonidal sinuses to reduce recurrence.</p> <p>In other circumstances only commissioned if either of the following clinical circumstances are met;</p> <ul style="list-style-type: none"> <li>• Abnormally located hair-bearing skin following reconstructive surgery.</li> <li>• There is an existing endocrine medical condition and severe facial hirsutism.</li> </ul> <p>1) Ferryman Gallwey (a method of evaluating and quantifying hirsutism in women). Score 3 or more per area to be treated.</p>

	<p>2) Medical treatments have been tried for at least one year and failed.</p> <p>3) Patients with a BMI of &gt;30 should be in a weight reduction programme and should of lost at least 5% body weight.</p> <p>All cases will be subject to an individual approval by the IFR Team and must be accompanied by an opinion from a secondary care consultant (i.e., endocrinologist).</p> <p>Photographs will also be required to allow the CCG’s to visibly assess the severity equitably. Funded for 6 treatments only at an NHS commissioned premises.</p> <p>Non-core procedure Interim Gender Dysphoria Protocol &amp; Service Guidelines 2013/14.</p> <p>Where the provision of ‘non-core’ surgeries is appropriate, the GIC should apply for treatment funding through the CCG; the GIC should endeavour to work in partnership with the CCG.</p>
<p><b>Evidence for inclusion and threshold</b></p>	<p>British Association of Dermatologists - hirsutism patient information leaflet                  Weblink: <a href="http://www.bad.org.uk/shared/get-file.ashx?id=89&amp;itemtype=document">http://www.bad.org.uk/shared/get-file.ashx?id=89&amp;itemtype=document</a>                  NHS Choices – Laser Hair Removal                  Weblink: <a href="http://www.nhs.uk/Conditions/cosmetic-treatments-guide/Pages/laser-hair-removal.aspx">http://www.nhs.uk/Conditions/cosmetic-treatments-guide/Pages/laser-hair-removal.aspx</a></p> <p>Pan Mersey APC Guidance for Eflornithine:  <a href="http://www.panmerseyapc.nhs.uk/recommendations/documents/PS158.pdf?UNLID=30670635620161221111329">http://www.panmerseyapc.nhs.uk/recommendations/documents/PS158.pdf?UNLID=30670635620161221111329</a></p>

**A14.8 Policy for Surgical Treatment for Pigeon Chest - Pectus Anomaly**

This policy has been superseded by NHS Cheshire & Merseyside ICB Policy:  
[CMICB\\_Clin038 – Pectus Deformity, surgical treatment](#)

**A14.9 Policy for Surgical Revision of Scars**

<p><b>Eligibility Criteria</b></p>	<p>The CCG will fund this treatment if the patient meets the following criteria:</p> <ul style="list-style-type: none"> <li>• For severe post burn cases or severe traumatic scarring</li> </ul> <p><b>OR</b></p> <ul style="list-style-type: none"> <li>• Revision surgery for scars following complications of surgery, keloid formation or other hypertrophic scar formation will only be commissioned where they are significantly functionally disabling or to restore normal function</li> </ul> <p>This means <b>(for patients who DO NOT meet the above criteria)</b> the CCG will <b>only</b> fund the treatment if an Individual Funding Request (IFR) application proves exceptional clinical need and that is supported by the CCG.</p>
<p><b>Evidence for inclusion and threshold</b></p>	<p><a href="#">Health Commission Wales. 2008 Commissioning Criteria – Plastic Surgery. Procedures of Low Clinical Priority/ Procedures not usually available on the National Health Service</a></p> <p>NHS Choices – Scars - Treatment  <a href="http://www.nhs.uk/Conditions/Scars/Pages/Treatment.aspx">http://www.nhs.uk/Conditions/Scars/Pages/Treatment.aspx</a></p>

<p><b>A14.10 Policy for Laser Tattoo Removal</b></p>	
<p><b>Eligibility Criteria</b></p>	<p>Only commissioned in any of the following circumstances:</p> <ul style="list-style-type: none"> <li>• Tattoo is result of trauma inflicted against the patient’s will.</li> <li>• The patient was a child and not responsible for his/her actions at the time of tattooing.</li> <li>• Inflicted under duress.</li> <li>• During adolescence or disturbed periods (only in very exceptional circumstances where tattoo causes marked limitations of psycho-social function).</li> </ul> <p>An individual funding request will be required.</p>
<p><b>Evidence for inclusion and threshold</b></p>	<p><a href="#">Health Commission Wales. 2008 Commissioning Criteria – Plastic Surgery. Procedures of Low Clinical Priority/ Procedures not usually available on the National Health Service</a></p> <p>Modernisation Agency’s Action on Plastic Surgery 2005.  <a href="http://www.bapras.org.uk/docs/default-source/commissioning-and-policy/information-for-commissioners-of-plastic-surgery-services.pdf?sfvrsn=2">http://www.bapras.org.uk/docs/default-source/commissioning-and-policy/information-for-commissioners-of-plastic-surgery-services.pdf?sfvrsn=2</a></p> <p>NHS Choices – The NHS Guide to cosmetic procedures                  Weblink:  <a href="http://www.nhs.uk/Conditions/cosmetic-treatments-guide/Pages/tattoo-removal.aspx">http://www.nhs.uk/Conditions/cosmetic-treatments-guide/Pages/tattoo-removal.aspx</a></p>

<b>A14.11 Abdominoplasty/Apronectomy (sometimes called ‘tummy tuck’)</b>	
<p>This policy has been superseded by NHS Cheshire &amp; Merseyside ICB Policy:  <a href="#">CMICB Clin099 – Abdominoplasty or Apronectomy (tummy tuck)</a></p>	
<b>A14.12 Policy for Thigh Lift, Buttock Lift and Arm Lift, Excision of Redundant Skin or Fat</b>	
<p>This policy has been superseded by NHS Cheshire &amp; Merseyside ICB Policy:  <a href="#">CMICB Clin006 – Body Contouring and other excisions - Buttock lift, thigh lift (thighplasty) and arm lift (brachioplasty)</a></p>	
<b>A14.13 Policy for Surgical Treatments for hair Loss</b>	
<b>Eligibility Criteria</b>	<p>Surgical Treatment for Alopecia, hair transplantation, Male Pattern Baldness and hair intralace systems will not be routinely commissioned.</p> <p>The NHS has a policy for Wigs which may be an alternative option for patients:  <a href="http://www.nhs.uk/NHSEngland/Healthcosts/Pages/Wigsandfabricsupports.aspx">http://www.nhs.uk/NHSEngland/Healthcosts/Pages/Wigsandfabricsupports.aspx</a></p> <p>The current cost is £67.75 for an acrylic wig with 2 allowed per year. There is no charge for chemotherapy patients.</p>
<b>Evidence for inclusion and threshold</b>	<p>British Association of Dermatologists - alopecia areata patient information leaflet                      Weblink:  <a href="http://www.bad.org.uk/shared/get-file.ashx?id=1975&amp;itemtype=document">http://www.bad.org.uk/shared/get-file.ashx?id=1975&amp;itemtype=document</a></p> <p><a href="#">Interventions for alopecia areata</a> – Cochrane Library 2008.  <a href="http://www.bad.org.uk/library-media%5Cdocuments%5CAlopecia_areata_guidelines_2012.pdf">http://www.bad.org.uk/library-media%5Cdocuments%5CAlopecia_areata_guidelines_2012.pdf</a></p> <p>Only one study which compared two topical corticosteroids showed significant short-term benefits.</p>

### A14.13 Policy for Surgical Treatments for hair Loss

No studies showed long-term beneficial hair growth. None of the included studies asked participants to report their opinion of hair growth or whether their quality of life had improved with the treatment.

[No evidence of effective treatments for alopecia](#) – Cochrane Pearls 2008.

NICE Clinical Knowledge Summaries 2014.

<https://cks.nice.org.uk/alopecia-areata>

[Health Commission Wales. 2008 Commissioning Criteria – Plastic Surgery. Procedures of Low Clinical Priority/ Procedures not usually available on the National Health Service](#)

Modernisation Agency's Action on Plastic Surgery 2005.

<http://www.bapras.org.uk/docs/default-source/commissioning-and-policy/information-for-commissioners-of-plastic-surgery-services.pdf?sfvrsn=2>

NHS Choices – Guide to Hair Loss Treatment

Weblink:

<http://www.nhs.uk/Conditions/Hair-loss/Pages/Treatment.aspx>

[Hair transplantation](#)

[A trial on subcutaneous pedicle island flap for eyebrow reconstruction](#) – Mahmood & Mehri. *Burns*, 2010, Vol. 36(5), p692-697.

Modernisation Agency's Action on Plastic Surgery 2005.

<http://www.bapras.org.uk/docs/default-source/commissioning-and-policy/information-for-commissioners-of-plastic-surgery-services.pdf?sfvrsn=2>

### A14.16 Policy for Labiaplasty, Vaginoplasty and Hymenorrhaphy

This policy has been superseded by NHS Cheshire & Merseyside ICB Policy:

[CMICB Clin077 – Labiaplasty, vaginoplasty and hymenorrhaphy](#)

### **A14.17 Policy for Liposuction**

This policy has been superseded by NHS Cheshire & Merseyside ICB Policy:  
[CMICB Clin0100 – Liposuction](#)

### **A14.18 Policy for Rhytidectomy - Face or Brow Lift**

This policy has been superseded by NHS Cheshire & Merseyside ICB Policy:  
[CMICB Clin042 – Rhytidectomy](#)

## **15. Respiratory**

### **A15.1 Intervention for Snoring (not OSA)**

This policy has been superseded by NHS Cheshire & Merseyside ICB Policy:  
[CMICB Clin043 – Simple snoring, surgical management](#)

## **16. Trauma and Orthopaedics**

<b>A16.1 Policy for non-invasive interventions for low Back pain and sciatica</b>	
<b>Eligibility Criteria</b>	<p><b><u>Acupuncture</u></b></p> <p>Acupuncture for low back pain and sciatica is <b>not routinely commissioned</b></p> <p><b><u>Manual Therapy</u></b></p> <p>The following procedures are <b>not routinely commissioned</b>:</p> <ul style="list-style-type: none"><li>• Lumbar traction</li><li>• Technology Assisted Micromobilisation and Reflex Stimulation (TAMARS)</li><li>• Manual therapy (spinal mobilisation, manipulation, soft tissue techniques and massage) in isolation.</li></ul> <p>Note: Consider manual therapy (spinal manipulation, mobilisation or soft tissue techniques such as massage) for managing low back pain with or without sciatica, but only as part of a treatment package including exercise, with or without psychological therapy.</p> <p><b><u>Orthotics</u></b></p> <p>The following are <b>not routinely commissioned</b>:</p> <ul style="list-style-type: none"><li>• Foot orthotics</li><li>• Rocker shoes</li><li>• Belts and corsets</li></ul> <p><b><u>Electrotherapy</u></b></p> <p>The following are <b>not routinely commissioned</b>:</p> <ul style="list-style-type: none"><li>• Transcutaneous electrical nerve stimulation (TENS)</li></ul>



## A16.1 Policy for non-invasive interventions for low Back pain and sciatica

- Percutaneous electrical nerve stimulation (PENS)
- Ultrasound
- Interferential
- Laser therapy

### **Pharmacological interventions**

The CCG **does not routinely commission** the following in the treatment of low back pain without Neuropathic pain:

- Paracetamol used alone
- Selective serotonin re-uptake inhibitors (**SSRIs**)
- Serotonin– norepinephrine reuptake inhibitors
- Tricyclic antidepressants
- Anti-convulsants
- Opioids for the management of acute back pain (if NSAIDs are contraindicated, ineffective or not tolerated then weak opioids may be given +/- paracetamol)

Patients with neuropathic pain should be managed in line with NICE CG 173:

- Offer a choice of amitriptyline, duloxetine, gabapentin or pregabalin as initial treatment for neuropathic pain (except trigeminal neuralgia)

1.1.9 If the initial treatment is not effective or is not tolerated, offer one of the remaining 3 drugs, and consider switching again if the second and third drugs tried are also not effective or not tolerated.

1.1.10 Consider tramadol only if acute rescue therapy is needed (see recommendation 1.1.12 about long-term use).

1.1.11 Consider capsaicin cream [4] for people with localised neuropathic pain who wish to avoid, or who cannot tolerate, oral treatments.

<b>A16.1 Policy for non-invasive interventions for low Back pain and sciatica</b>	
	<p><b><i>Treatments that should not be used</i></b></p> <p>1.1.12 Do not start the following to treat neuropathic pain in non-specialist settings, unless advised by a specialist to do so:</p> <ul style="list-style-type: none"> <li>• cannabis sativa extract</li> <li>• capsaicin patch</li> <li>• lacosamide</li> <li>• lamotrigine</li> <li>• levetiracetam</li> <li>• morphine</li> <li>• oxcarbazepine</li> <li>• topiramate</li> <li>• tramadol (this is referring to long-term use; see recommendation 1.1.10 for short-term use)</li> <li>• venlafaxine.</li> </ul>
<b>Evidence for inclusion and threshold</b>	<p>Low back pain and sciatica in over 16s: assessment and management (November 2016)  <a href="https://www.nice.org.uk/guidance/ng59">https://www.nice.org.uk/guidance/ng59</a></p> <p>National Low Back and Radicular Pain Pathway 2017  <a href="http://www.ukssb.com/assets/PDFs/2017/February/National-Low-Back-and-Radicular-Pain-Pathway-2017_final.pdf">http://www.ukssb.com/assets/PDFs/2017/February/National-Low-Back-and-Radicular-Pain-Pathway-2017_final.pdf</a></p> <p>Osteoarthritis: the care and management of osteoarthritis in adults  <a href="https://www.nice.org.uk/guidance/cg59">https://www.nice.org.uk/guidance/cg59</a></p> <p>The effect of TAMARS treatments on chronic back pain, disability and quality of life - Lyndsey Mountain BSc Physiotherapy MCSP (Oct 2012)  <a href="http://tamars.co.uk/wp/wp-content/uploads/2012/10/21stCenturyBackCare.pdf">http://tamars.co.uk/wp/wp-content/uploads/2012/10/21stCenturyBackCare.pdf</a></p> <p><a href="#">Final TAMARS report[1].pdf</a></p>

### **A16.2 Policy for Imaging for Patients Presenting with Low Back Pain**

This policy has been superseded by NHS Cheshire & Merseyside ICB Policy:  
[CMICB Clin086 – Low Back Pain Imaging](#)

### **A16.3 Policy for Injections for back pain**

This policy has been superseded by NHS Cheshire & Merseyside ICB Policy:  
[CMICB Clin060 – Spinal Injections for Low Back Pain](#)

### **A16.4 Policy for Spinal Fusion**

This policy has been superseded by NHS Cheshire & Merseyside ICB Policy:  
[CMICB Clin087 – Spinal fusion surgery for non-specific, mechanical back pain](#)

### **A16.5 Policy for Arthroscopic Shoulder Decompression for Subacromial Shoulder Pain**

This policy has been superseded by NHS Cheshire & Merseyside ICB Policy:  
[CMICB Clin092 – Subacromial shoulder pain, arthroscopic shoulder decompression surgery](#)

### **A16.6 Policy for Peripheral Nerve-field Stimulation (PNFS) for Chronic Low Back Pain**

This policy has been superseded by NHS Cheshire & Merseyside ICB Policy:  
[CMICB Clin012 – Chronic Low Back Pain, Peripheral Nerve Field Stimulation](#)

--

**A16.7 Policy for Therapeutic endoscopic Division of epidural adhesions**

This policy has been superseded by NHS Cheshire & Merseyside ICB Policy: [CMICB Clin019 – Epidural Adhesions, Therapeutic Endoscopic Division](#)

**B16.17 Bone Morphogenetic Proteins, Dibotermin Alfa, Eptotermin Alpha**

<b>Eligibility Criteria</b>	<p>Dibotermin alfa is commissioned in the following situation:</p> <ul style="list-style-type: none"> <li>The treatment of acute tibia fractures in adults, as an adjunct to standard care using open fracture reduction and intramedullary unreamed nail fixation.</li> </ul> <p>Eptotermin alfa is commissioned in line with its licensed indication:</p> <ul style="list-style-type: none"> <li>Treatment of non-union of tibia of at least 9 month duration, secondary to trauma, in skeletally mature patients, in cases where previous treatment with autograft has failed or use of autograft is unfeasible.</li> </ul>
-----------------------------	--

<b>Evidence</b>	<p><a href="#">Clinical effectiveness and cost-effectiveness of bone morphogenetic proteins in the non-healing of fractures and spinal fusion: a systematic review</a></p> <p>Health Technology Assessment NHS R&amp;D HTA Programme, 2007.</p> <p><a href="#">Clinical effectiveness and cost-effect... [Health Technol Assess. 2007] - PubMed - NCBI</a></p> <p><a href="#">Annals of Internal Medicine   Safety and Effectiveness of Recombinant Human Bone Morphogenetic Protein-2 for Spinal Fusion: A Meta-analysis of Individual-Participant Data</a></p> <p>June 2013</p> <p><a href="#">BMPs: Options, indications, and effectiveness – Journal of Orthopaedic Trauma. 2010 Mar;24 Suppl 1:S9-16</a></p>
-----------------	---

**A16.18 Policy for Trigger Finger Release**

This policy has been superseded by NHS Cheshire & Merseyside ICB Policy:

[CMICB Clin048 – Trigger Finger release in adults](#)

### **A16.19 Policy for Hyaluronic Acid and Derivatives Injections for Peripheral joint pain**

This policy has been superseded by NHS Cheshire & Merseyside ICB Policy:

[CMICB Clin036 – Osteoarthritic induced changes in peripheral joints \(knee, hips, ankle & thumb\), intra-articular hyaluronan \(hyaluronic acid\)](#)

### **B16.20 Secondary Care Administered Steroid Joint Injections**

This policy has been superseded by NHS Cheshire & Merseyside ICB Policy:

[CMICB Clin037 – Osteoarthritis-induced joint pain, secondary care administration of intra-articular corticosteroids](#)

### **A16.21 Policy for Dupuytren’s Contracture Release**

This policy has been superseded by NHS Cheshire & Merseyside ICB Policy:

[CMICB Clin016 – Dupuytren’s Contracture release in adults](#)

### **A16.23a Policy for Hip Replacement Surgery**

This policy has been superseded by NHS Cheshire & Merseyside ICB Policy:

[CMICB Clin084 – Hip and knee replacement surgery](#)

### **A16.23b Policy for Knee Replacement Surgery**

This policy has been superseded by NHS Cheshire & Merseyside ICB Policy:  
[CMICB Clin084 – Hip and knee replacement surgery](#)

### **B16.24 Diagnostic Arthroscopy for Arthritis of the Knee**

This policy has been superseded by NHS Cheshire & Merseyside ICB Policy:  
[CMICB Clin004 – Arthroscopic Surgery of the Knee for Meniscal Tears](#)

### **A16.25 Policy for Knee Arthroscopy with Osteoarthritis**

This policy has been superseded by NHS Cheshire & Merseyside ICB Policy:  
[CMICB Clin028 – Knee Osteoarthritis, Arthroscopic Lavage and Debridement](#)

### **B16.26 Patient Specific Unicompartamental Knee Replacement**

This policy has been superseded by NHS Cheshire & Merseyside ICB Policy:  
[ICB Policy CMICB Clin094 – Patient-specific unicompartamental knee replacement](#)

### **B16.27 Patient Specific Total Knee Replacement**

This policy has been superseded by NHS Cheshire & Merseyside ICB Policy:  
[CMICB\\_Clin047 – Total Knee Arthroplasty, patient specific instrumentation/implants](#)

### A16.28 Policy for Carpal tunnel Syndrome Release

This policy has been superseded by NHS Cheshire & Merseyside ICB Policy:  
[CMICB\\_Clin010 – Carpal Tunnel interventions and surgery](#)  
[CMICB\\_Clin112 – Carpal Tunnel Syndrome, Nerve Conduction Testing](#)

### B16.29 Surgical Removal of Muroid Cysts at Distal Inter Phalangeal Joint (DIP)

This policy has been superseded by NHS Cheshire & Merseyside ICB Policy:  
[CMICB\\_Clin033 – Muroid Cysts of the Fingers at the Distal Interphalangeal \(DIP\) Joint, surgical removal](#)

### A16.30 Policy for Surgical Removal of Ganglions

This policy has been superseded by NHS Cheshire & Merseyside ICB Policy:  
[CMICB\\_Clin022 – Ganglia, surgical removal and general management](#)

### B16.31 Hip Arthroscopy for Femoro– Acetabular Impingement

#### Eligibility Criteria

CCGs routinely commission hip arthroscopy (from surgeons with specialist expertise in this type of surgery) in line with the requirements stipulated by NICE IPG 408, and only for patients who fulfil ALL of the following criteria:

- A definite diagnosis of hip impingement syndrome/femoro- acetabular impingement (FAI) has been made by appropriate investigations, X-rays, MRI and CT scans.

<b>B16.31 Hip Arthroscopy for Femoro– Acetabular Impingement</b>	
	<ul style="list-style-type: none"> <li>• An orthopaedic surgeon who specialises in young adult hip surgery has made the diagnosis in collaboration with a specialist musculoskeletal radiologist.</li> <li>• The patient has had severe FAI symptoms (restriction of movement, pain and ‘clicking’) or significantly compromised functioning for at least 6 months.</li> </ul> <p>The symptoms have not responded to all available conservative treatment options including activity modification, drug therapy (NSAIDs) and specialist physiotherapy.</p>
<b>Evidence</b>	<p><a href="#">IPG408 Arthroscopic femoro-acetabular surgery for hip impingement syndrome: guidance</a> – NICE, 2011.</p> <p><a href="http://www.hullccg.nhs.uk/uploads/policy/file/22/hip-arthroscopy-hull-ccg.pdf">http://www.hullccg.nhs.uk/uploads/policy/file/22/hip-arthroscopy-hull-ccg.pdf</a></p> <p>NHS Hull Clinical Commissioning Group 2012. Vijay D Shetty, Richard N Villar. <a href="#">Hip arthroscopy: current concepts and review of literature</a>. British Journal of Sports Medicine, 2007;41:64–68.</p> <p>Macfarlane RJ, Haddad FS <a href="#">The diagnosis and management of femoro-acetabular impingement</a>. Annals of the Royal College of Surgeons of England, July 2010, vol/iss 92/5(363-7).</p> <p>Ng V Y et al.. <a href="#">Efficacy of Surgery for Femoro- acetabular Impingement: A Systematic Review</a>. American Journal of Sports Medicine, November 2010,38 2337-2345.</p> <p>Commissioning Guide: <a href="#">Painful osteoarthritis of the hip</a></p> <p>Royal College of Surgeons (2013).</p> <p><a href="#">IPG408 Arthroscopic femoro-acetabular surgery for hip impingement syndrome: guidance</a> NICE, 2011</p>
<b>Comments</b>	<p>Current evidence on the efficacy of arthroscopic femoro–acetabular surgery for hip impingement syndrome is adequate in terms of symptom relief in the short and medium term.</p> <p>With regard to safety, there are well-recognised complications. Therefore this procedure may be used provided that normal arrangements are in place for clinical governance, consent and audit with local review of outcomes.</p>



### B16.32 Surgical Removal of Bunions/Surgery for Lesser Toe Deformity

This policy has been superseded by NHS Cheshire & Merseyside ICB Policy:

[CMICB\\_Clin008 – Bunions, surgical removal](#)

### B16.33 Surgical Treatment of Morton’s Neuroma

This policy has been superseded by NHS Cheshire & Merseyside ICB Policy:

[CMICB\\_Clin032 – Morton’s Neuroma, surgical treatment](#)

### B16.34 Surgical Treatment of Plantar Fasciitis

<p><b>Eligibility Criteria</b></p>	<p>Surgical Treatment is not routinely commissioned unless the following pathway has been followed:</p> <ul style="list-style-type: none"> <li>• Patient has documented evidence that they are not responding to conservative treatments</li> <li>• Patient is experiencing significant pain or it is having a serious impact on their daily life and has completed the following:                             <ul style="list-style-type: none"> <li>• Three months of conservative therapy such as footwear modification, stretching exercises, ice packs, weight loss</li> <li>• Been referred to a podiatrist or physiotherapist</li> </ul> </li> </ul> <p>Not responded to corticosteroid injections</p>
<p><b>Evidence</b></p>	<p><a href="#">Heel pain--plantar fasciitis: clinical practice guidelines linked to the international classification of function, disability, and health from the orthopaedic section of the American Physical Therapy Association</a> - Journal of Orthopaedic &amp; Sports Physical Therapy. 2008:38(4):A1-A18.</p> <p><a href="#">Plantar fasciitis</a></p>

### B16.34 Surgical Treatment of Plantar Fasciitis

NICE Clinical Knowledge Summaries (2009). [Plantar fasciitis](#)  
BMJ 2012;345:e6603.

### B16.35 Treatment of Tendinopathies (Extracorporeal Shock Wave Therapy; Autologous Blood or Platelet Injection)

This policy has been superseded by NHS Cheshire & Merseyside ICB Policy:  
[CMICB Clin001 - Achilles Tendinopathy, Refractory Tennis Elbow and Plantar Fasciitis: treatment with extracorporeal shockwave therapy, autologous blood or platelet rich plasma injections](#)

### A16.36 Policy for Arthroscopic Shoulder Decompression for Subacromial Shoulder Pain

This policy has been superseded by NHS Cheshire & Merseyside ICB Policy:  
[CMICB Clin092 – Subacromial shoulder pain, arthroscopic shoulder decompression surgery](#)

## 17. Urology

### A17.1 Policy for Circumcision for medical reasons only

This policy has been superseded by NHS Cheshire & Merseyside ICB Policy:  
[CMICB Clin104 – Penile circumcision in children and young people under 16 years](#)

### B17.3 Reversal of Male Sterilisation

This policy has been superseded by NHS Cheshire & Merseyside ICB Policy:  
[ICB Policy CMICB Clin040 – Reversal of Male Sterilisation](#)

### B17.4 ESWT (extracorporeal shockwave therapy) for Prostadynia or Pelvic Floor Syndrome

This policy has been superseded by NHS Cheshire & Merseyside ICB Policy:  
[CMICB Clin111 – Chronic Pelvic Pain Syndrome in Men, Hyperthermia, Extracorporeal Shockwave Therapy and Sacral Neuromodulation](#)

### B17.5 Hyperthermia Treatment for Prostadynia or Pelvic Floor Syndrome

This policy has been superseded by NHS Cheshire & Merseyside ICB Policy:  
[CMICB Clin111 – Chronic Pelvic Pain Syndrome in Men, Hyperthermia, Extracorporeal Shockwave Therapy and Sacral Neuromodulation](#)

### B17.6 Surgery for Prostatism

<b>Eligibility Criteria</b>	<p>Only commissioned where there are sound clinical reasons and after failure of conservative treatments and in any of the following circumstances:</p> <ul style="list-style-type: none"> <li>• International prostate symptom score &gt;7; dysuria;</li> <li>• Post voided residual volume &gt;150ml;</li> <li>• Recurrent proven Urinary Tract Infections (UTI);</li> <li>• Deranged renal function;</li> <li>• Prostate-specific antigen (PSA) &gt; age adjusted normal values.</li> </ul>
-----------------------------	--

<b>B17.6 Surgery for Prostatism</b>	
<b>Evidence</b>	CG97: <a href="#">Lower urinary tract symptoms: The management of lower urinary tract symptoms in men</a> NICE 2010. <a href="#">LUTS in men, age-related (prostatism)</a> NICE Clinical Knowledge Summaries (2010). <a href="http://www.rcseng.ac.uk/healthcare-bodies/docs/published-guides/luts">http://www.rcseng.ac.uk/healthcare-bodies/docs/published-guides/luts</a> Royal College of Surgeons (2013).
<b>Comments</b>	No references to treatment thresholds found.

## 18. Vascular Surgery

<b>B18.1 Surgery for Extreme Sweating (Hyperhidrosis – all areas; Surgical Resection Endoscopic Thoracic Sympathectomy)</b>
<p>This policy has been superseded by NHS Cheshire &amp; Merseyside ICB Policy: <a href="#">CMICB Clin027 – Hyperhidrosis (excessive sweating), Surgical Management</a></p>

<b>B18.2 Chelation Therapy for Vascular Occlusions</b>
<p>This policy has been superseded by NHS Cheshire &amp; Merseyside ICB Policy: <a href="#">CMICB Clin015 – Disodium Ethylenediaminetetraacetic Acid (EDTA) in prevention of Cardiovascular Events in patients with a previous Myocardial Infarction</a></p>

--

<b>A18.3 Policy for Varicose Veins Interventions</b>
--

<p>This policy has been superseded by NHS Cheshire &amp; Merseyside ICB Policy:  <a href="#">CMICB Clin049 – Varicose Veins</a></p>
---

## 19. Other

<b>B19.1 Botulinum Toxin A &amp; B</b>
--

<b>Eligibility Criteria</b>	<p>Used in several types of procedures e.g. to treat muscle disorders, excessive sweating (hyperhidrosis) and migraine.</p> <p>The use of botulinum toxin type A is commissioned in the following indications:</p> <ul style="list-style-type: none"> <li>• Anal fissures only following a minimum of two months with standard treatment (lifestyle and topical pharmaceutical products) for chronic anal fissures that have not resulted in fissure healing; and only a maximum of 2 courses of injections.</li> <li>• Blepharospasm and hemifacial spasm.</li> <li>• Probable contracture of joint in multiple sclerosis, in conjunction with prolonged stretching modalities</li> </ul>
-----------------------------	--

## B19.1 Botulinum Toxin A & B

(i.e. in line with NICE Clinical Guideline 8). <http://guidance.nice.org.uk/CG8>

- Focal dystonia, where other measures are inappropriate or ineffective.
- Focal spasticity in patients with upper motor neurone syndrome, caused by cerebral palsy, stroke, acquired brain injury, multiple sclerosis, spinal cord injuries and neurodegenerative disease, where other measures are inappropriate or ineffective.
- Idiopathic cervical dystonia (spasmodic torticollis).
- Prophylaxis of headaches in adults with chronic migraine (defined as headaches on at least 15 days per month of which at least 8 days are with migraine) that has not responded to at least three prior pharmacological prophylaxis therapies, and whose condition is appropriately managed for medication overuse (i.e. in line with NICE Technology Appraisal 260). <http://guidance.nice.org.uk/TA260>
- Refractory detrusor overactivity, only in line with NICE Clinical Guideline 171 (women) <http://guidance.nice.org.uk/CG171> and Clinical Guideline 97 (men) <http://guidance.nice.org.uk/CG97> where conservative therapy and conventional drug treatment has failed to control symptoms.
- Sialorrhoea (excessive salivary drooling), when all other treatments have failed.

Botulinum toxin type A is not routinely commissioned in the following indications:

- Canthal lines (crow's feet) and glabellar (frown) lines.
- Hyperhidrosis.
- Any other indication that is not listed above

The use of Botulinum Type B is not routinely commissioned.

Where the use of botulinum toxin is used to treat an indication outside of the manufacturer's marketing authorisation, clinicians and patients should be aware of the particular governance requirements, including consent (which must be documented) for using drugs outside of their licensed indications.

For patients with conditions which are not routinely commissioned, as indicated above, requests will continue to be considered by Cheshire & Merseyside Clinical Commissioning Groups processes for individual funding requests, if there is evidence that the patient is considered to have clinically

<b>B19.1 Botulinum Toxin A &amp; B</b>	
	<p>exceptional circumstances to any other patient experiencing the same condition within Cheshire &amp; Merseyside.</p> <p>Requests to commission the use of botulinum toxin as an option to treat other indications, where a known cohort of patients can be identified, should be processed in accordance with the relevant CCG's defined processes.</p> <p>If a subsequent CCG approved policy supersedes the information above, this section will be reviewed and updated.</p>
<b>Evidence</b>	<p>NICE TA260 June 2012 – Migraine (chronic) botulinum toxin type A <a href="http://guidance.nice.org.uk/TA260">http://guidance.nice.org.uk/TA260</a></p> <p>Idiopathic detrusor instability - only commissioned in accordance with NICE CG171 Sept 2013 - Urinary incontinence in women <a href="http://guidance.nice.org.uk/CG171">http://guidance.nice.org.uk/CG171</a> and only one course of injections.</p> <p><a href="#">Diagnosis and management of hyperhidrosis</a> British Medical Journal.</p>