

## Radiology Out of Hours Reporting Hub

### WHY IMPLEMENT AN OOH'S REPORTING HUB?

- In 2015 a group of Cheshire and Merseyside Consultant Radiologists (**Dr Peter Rowlands, Dr John Curtis, Dr Furhan Razzaq**) implemented a move from hospital-based 24/7 registrar on-call model to a collaborative model supported by the regional picture archiving communication solution (PACS).
- The aim was to improve the quality of radiology training by ensuring specialist trainees could spend more time in their department and less time on-call or on rest days.

### HOW DOES THE HUB WORK?

- The Hub is based at Broadgreen Hospital with a second site at Aintree Hospital, where national trauma requirements require the physical presence of a Radiologist to provide instant opinion for trauma studies.
- The Hub provides a service:
  - Overnight Mon to Fri, 5pm to 9am.
  - Over the weekend Fri 5pm to Mon 9am.
- Four STs per shift, three of whom are based at the Hub and one based at Aintree Hospital.
- The senior ST (ST4 or above) based at the Hub acts as shift leader.
- The STs are responsible for taking referrals from the Trusts who use the hub, reviewing the images and issuing reports.

### TRUSTS IN SCOPE

- Countess of Chester NHS Foundation Trust
- Liverpool Heart and Chest Hospital NHS Foundation Trust
- Liverpool University Hospitals NHS Foundation Trust
- St. Helens and Knowsley Teaching Hospitals NHS Trust
- Warrington and Halton NHS Foundation Trust
- Wirral University Teaching Hospitals NHS Foundation Trust

### OUT OF SCOPE TRUSTS

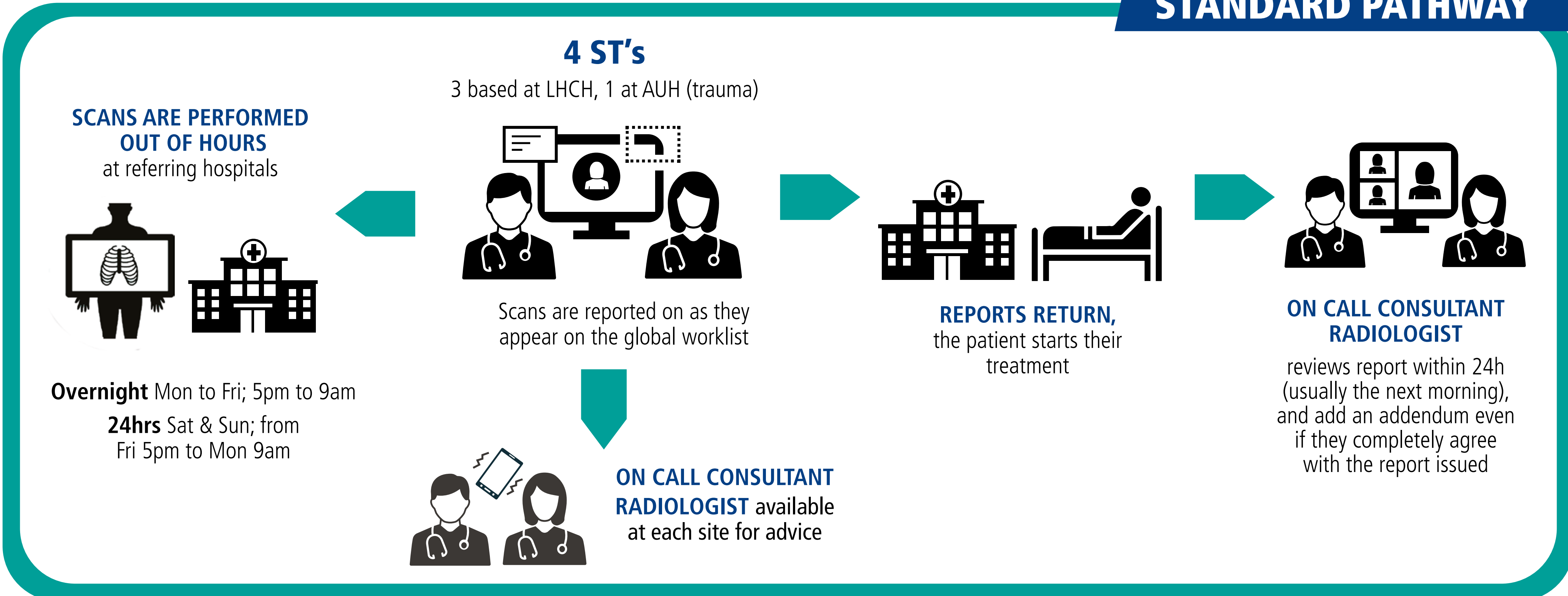
No Registrar to contribute to the rota:

- Mid Cheshire Hospitals NHS Foundation Trust
- Southport and Ormskirk Hospital NHS Trust

Specialist Out of Hours Reporting:

- Alder Hey Children's NHS Foundation Trust
- Liverpool Women's Hospital NHS Foundation
- The Clatterbridge Cancer Centre NHS Foundation Trust
- The Walton Centre NHS Foundation Trust

### STANDARD PATHWAY



### EXPECTATIONS

- Each site has its own on-call consultant who is available for advice, will review the reports for their individual hospital within 24h (usually the next morning).
- Trainees must review the consultant addenda to ensure learning from the scans they report. The Hub hosts its own REAL (radiology education and learning) meeting three times a year to share learning.

### CLINICAL BENEFITS

- Less disruption to ST training
- Peer supported learning at Hub
- Established consultant radiologist feedback process to STs via addended reports.
- Established mandatory discrepancy monitoring and feedback meetings for STs.
- Consistent out of hours radiological advice available for radiographers.
- Prioritisation of cases allows prompt reporting of critical patient imaging with rapid results referring clinicians.
- Limited disturbance for consultant radiologists on call – less impact on following day's job plan.
- Established robust governance arrangements in place – providing assurance for patient safety and staff wellbeing.

### FOR MORE INFORMATION

If you would like more information on the C&M journey to the out of hours reporting hub please contact: [CAMRIN@liverpoolft.nhs.uk](mailto:CAMRIN@liverpoolft.nhs.uk)

