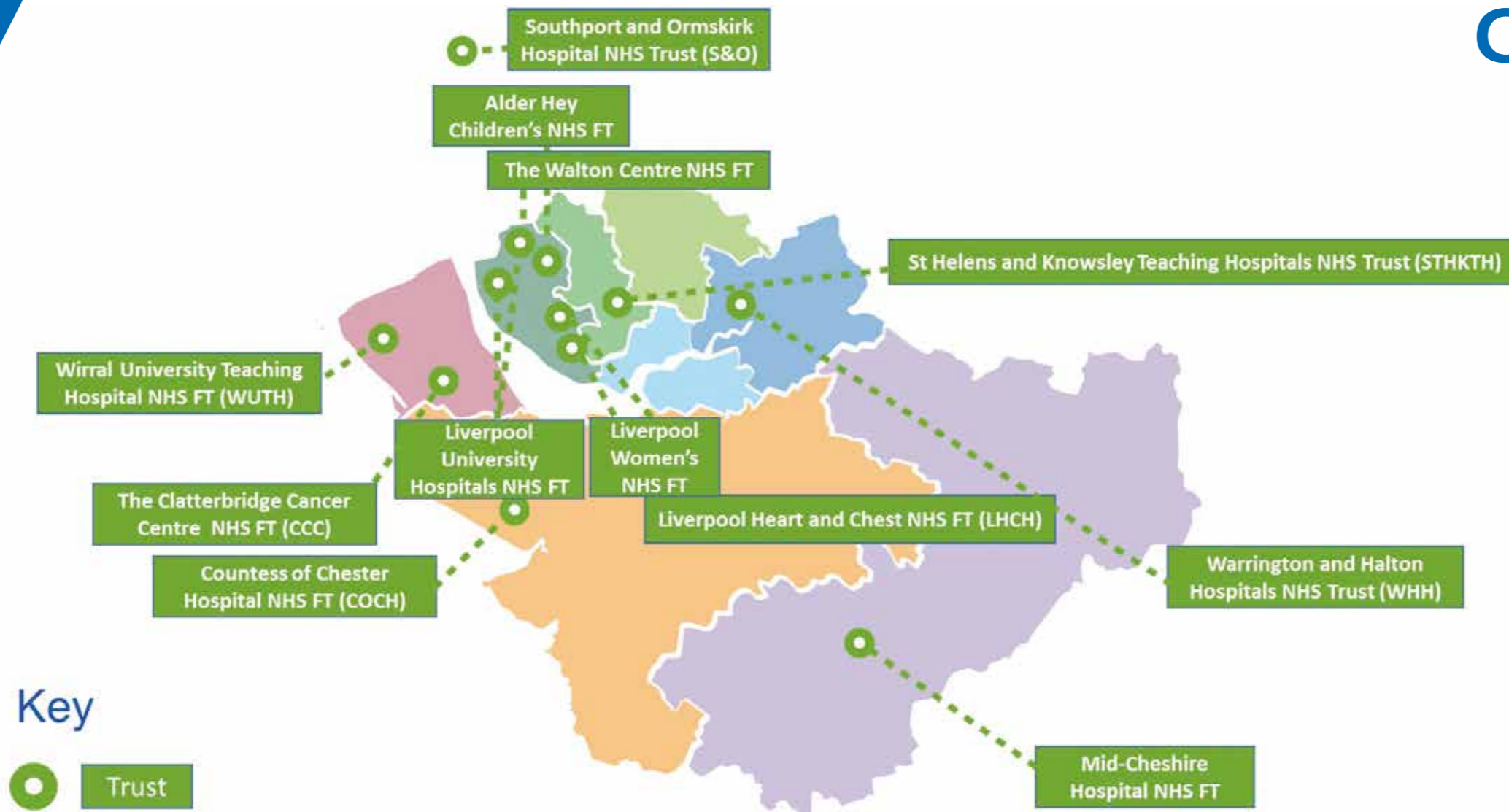


### BACKGROUND

- 12 Trusts; 21 Hospitals
- 2.5 million people
- 1 Integrated Care Board
- 1 Cancer Alliance



**2013**  
Collaborative procurement of PACS and RIS

**2012**  
Radiology Out of Hours Hub established

**2016**  
STP Radiology plan developed

**2017**  
C&M successful bid to the National Cancer Transformation Fund

**2017-19**  
Programme of change established

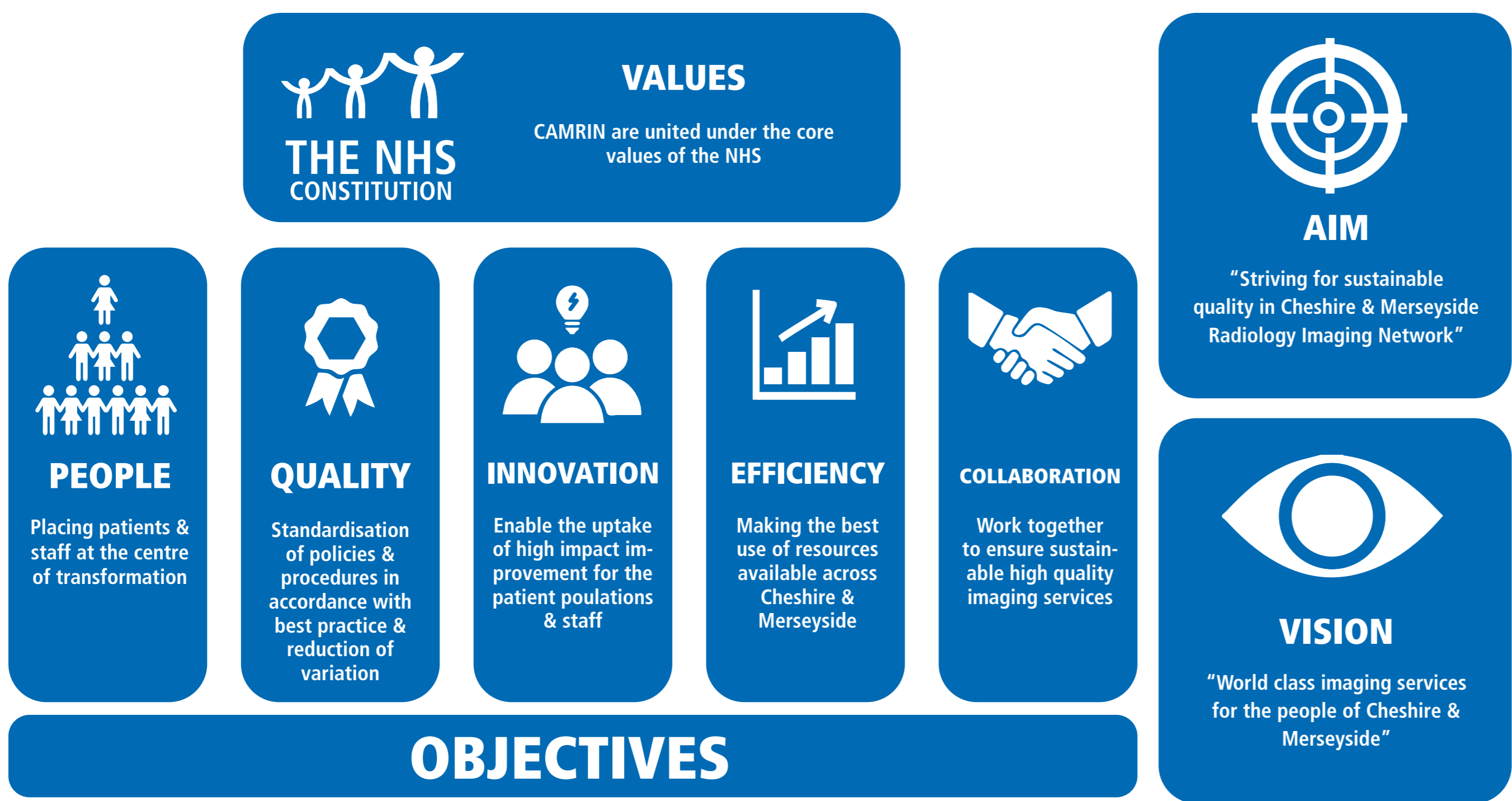
**2018**  
Digital funding awarded for Other 'ologies & Workflow management

**2019**  
NHS Long Term Plan committed to developing imaging networks

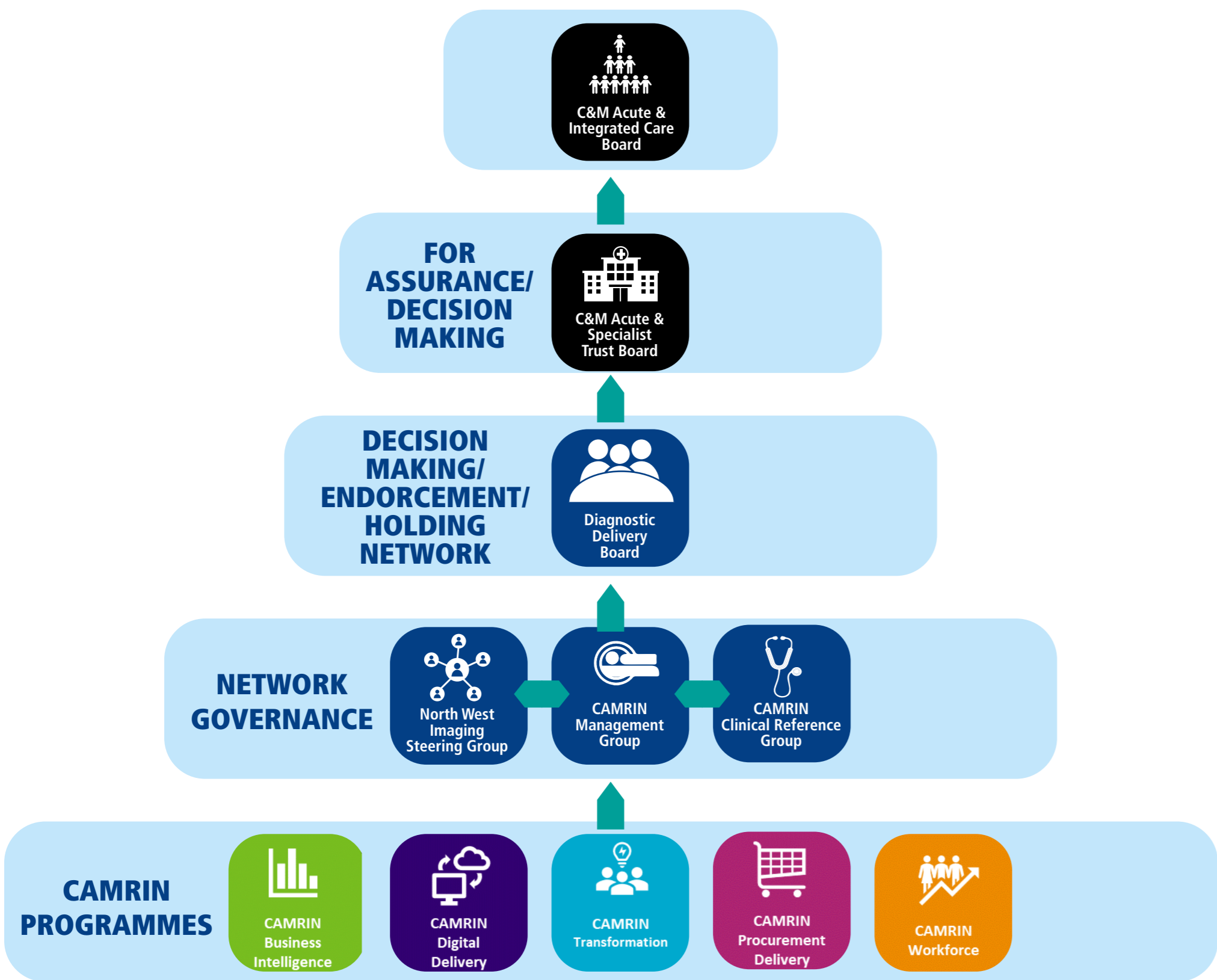
**2019**  
Trusts within Cheshire and Merseyside signed up to a network MOU

**2019**  
CAMRIN PMO established

### CAMRIN; VALUES, VISION, AIM & OBJECTIVES



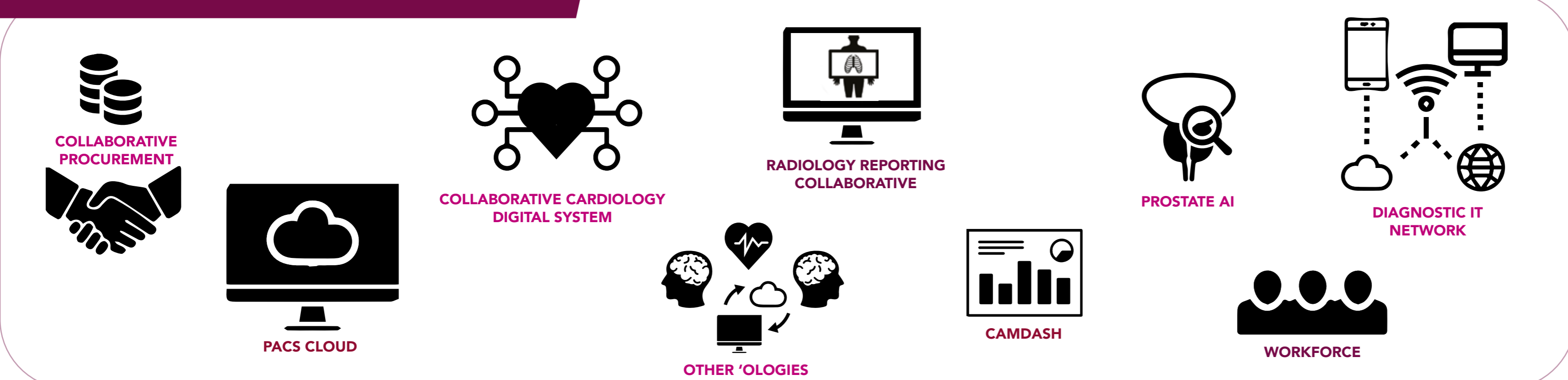
### GOVERNANCE



### DELIVERED

- Single approach to capacity and demand
- International recruitment
- Single price for outsourced reporting
- Brainomix AI
- 3 x Health Education England Bids
- Procurement savings
- North West Workforce Strategy
- £30 million additional imaging equipment
- 9 x Community Diagnostic centres
- Full coverage of home reporting
- Successfully implemented cancer pathways
- Cross site working implemented
- Procurement of a cloud based PACS across 12 trusts
- Implementation of cloud based RIS across 10 trusts
- Collaborative Medical Physicist service

### CURRENT KEY PROJECTS



### FOR MORE INFORMATION

If you would like more information on the C&M journey to the out of hours reporting hub please contact: [CAMRIN@liverpoolft.nhs.uk](mailto:CAMRIN@liverpoolft.nhs.uk)

